

ACCEPTED MATERIALS AT WASTE AND RESOURCE RECOVERY FACILITIES

	BOONAH	CANUNGRA	CENTRAL (Bromelton)	KALBAR	PEAK CROSSING	RATHDOWNEY	TAMBORINE MOUNTAIN
NON-CHARGEABLE SERVICES (for Scenic Rim residents)							
General waste	✓	✓	✓	✓	✓	✓	✓
Co-mingled recyclables (paper/cardboard, glass bottles and jars, hard plastic, cans)	✓	✓	✓	✓	✓	✓	✓
Green waste*	✓	✓	✓	X	✓	✓	✓
Car batteries	✓	✓	✓	X	✓	✓	✓
Scrap metal	✓	✓	✓	X	✓	✓	✓
Engine oil (less than 25L)	✓	✓	✓	X	✓	✓	✓
E-waste	✓	✓	✓	X	✓	✓	✓
Agricultural chemical drums (empty and triple rinsed)	✓	✓	✓	✓	X	✓	X
Paint	✓	✓	✓	X	X	X	X
Empty gas cylinders (up to 9 kg) and fire extinguishers	✓	✓	✓	X	✓	✓	✓
Mobile phones, smart watches and accessories	✓	✓	✓	X	✓	✓	✓
CHARGEABLE SERVICES							
Asbestos*	X	X	✓	X	X	X	X
Dead animals*	X	X	✓	X	X	X	X
Fridges/freezers/air cons	✓	✓	✓	X	✓	✓	✓
Tyres	✓	✓	✓	X	✓	✓	✓
Clean concrete	X	X	✓	X	X	X	X
Clean fill*	X	X	✓	X	X	X	X
Commercial waste	✓	✓	✓	X	✓	✓	✓

* Tree stumps and tree trunks larger than 40cm will be charged at the general waste fee and can only be delivered to the Central landfill at Bromelton.

* These services **must be booked in advance**. Please contact Council on 5540 5111.

WASTE AND RESOURCE RECOVERY FACILITY OPERATING HOURS

CENTRAL (BROMELTON)

ADDRESS 43 Waste Facility Road, Bromelton
HOURS Monday–Sunday 9am–5pm

CANUNGRA

ADDRESS 2036 Beaudesert– Nerang Road
HOURS Monday–Wednesday 9am–5pm
Friday–Sunday 9am–5pm
CLOSED Thursday

TAMBORINE MOUNTAIN

ADDRESS 137 Knoll Road
HOURS Monday & Tuesday 9am–5pm
Thursday–Sunday 9am–5pm
CLOSED Wednesday

BOONAH

ADDRESS 24 Evans Road, Dugandan
HOURS Monday & Tuesday 9am–5pm
Thursday–Sunday 9am–5pm
CLOSED Wednesday

RATHDOWNEY

ADDRESS 10290 Mt Lindesay Highway
HOURS Monday, Thursday, Saturday 9am–5pm
CLOSED Tuesday, Wednesday, Friday and Sunday
Council will provide waste receptacles from 7am–9am on Mondays to allow disposal of domestic household waste only.

PEAK CROSSING

ADDRESS 62 Faulkners Quarry Road, Harrisville
HOURS Wednesday 9am–12pm
Saturday and Sunday 1pm–5pm
CLOSED Monday, Tuesday, Thursday and Friday

KALBAR

ADDRESS 14 Muller Road, Fassifern
HOURS Wednesday 1pm–5pm
Saturday–Sunday 9am–12pm
CLOSED Monday, Tuesday, Thursday and Friday

Last entry to all waste facilities is **10 minutes** before closing time.

When you have finished reading me, put me in your yellow-lid recycling bin. 

FOR MORE INFORMATION, CONTACT COUNCIL

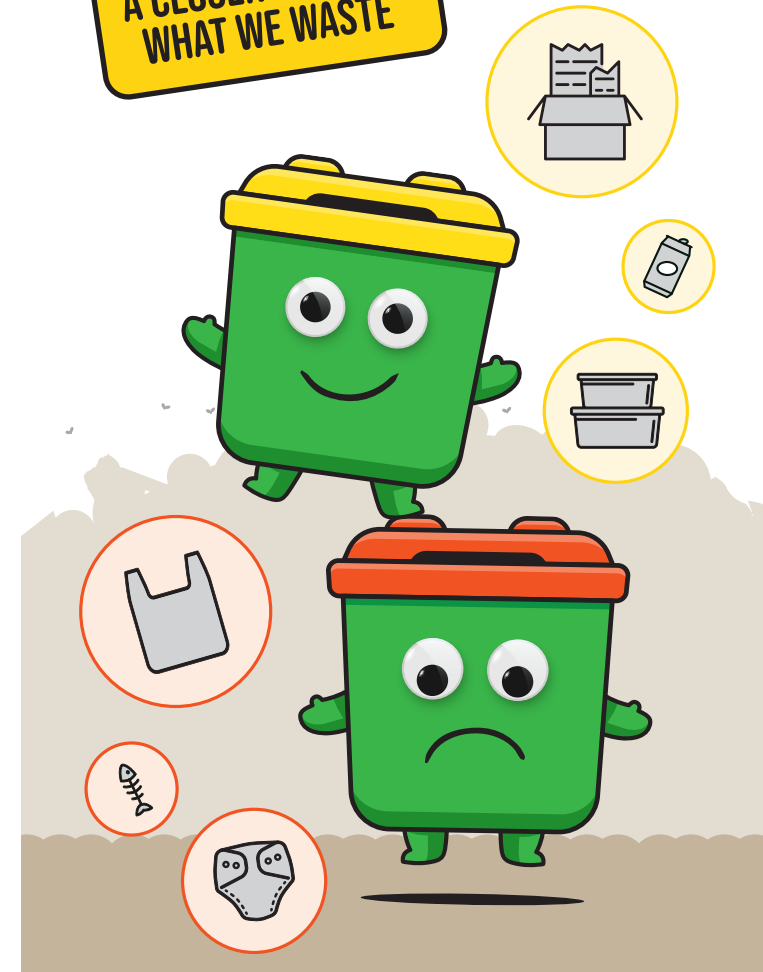


Printed on recycled paper.

SCENIC RIM
REGIONAL COUNCIL

YOUR WASTE BINS AND FACILITIES GUIDE

IT'S TIME TO TAKE A CLOSER LOOK AT WHAT WE WASTE



FOR MORE INFORMATION, CONTACT COUNCIL



Printed on recycled paper.

SCENIC RIM
REGIONAL COUNCIL

LOOK BEFORE YOU THROW!

First, check what bin an item belongs in. Separate your recycling from your general waste.

WHAT GOES IN YOUR BINS



2024-2025 RECYCLING BIN COLLECTION

GENERAL WASTE



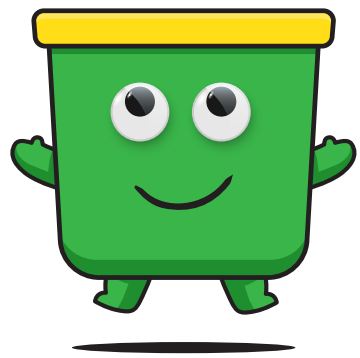
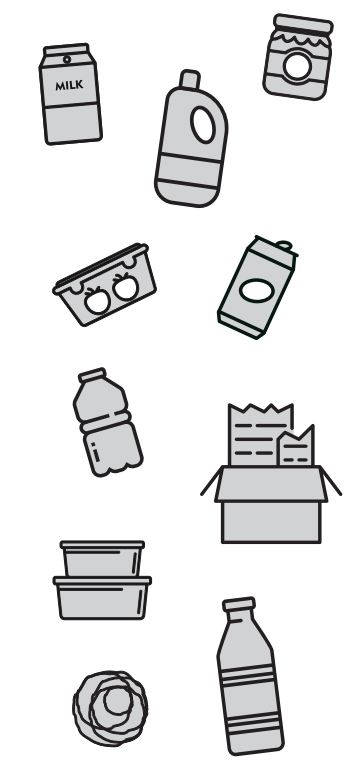
YES

- ✓ Food waste
- ✓ Bagged general waste
- ✓ Broken crockery and glassware
- ✓ Nappies
- ✓ Rags and textiles
- ✓ Soft plastic (chip packets and wrappers)
- ✓ Polystyrene
- ✓ Bagged garden waste

NO

- ✗ Batteries or battery containing devices
- ✗ Appliances or electronics
- ✗ Hot ashes or embers
- ✗ Construction and demolition waste (i.e. bricks, plasterboard, timber over 50cm)
- ✗ Stumps, large branches
- ✗ Unbagged lawn clippings
- ✗ Heavy items - your bin will not be emptied if it is over 70kg

RECYCLING



YES

- ✓ Paper and cardboard
- ✓ Glass bottles and jars
- ✓ Cans and aluminium foil
- ✓ Hard plastic containers and packaging

NO

- ✗ Plastic bags and soft plastics
- ✗ Batteries or battery containing devices
- ✗ Bottle caps and lids
- ✗ Appliances or electronics
- ✗ Hot ashes or embers
- ✗ Construction and demolition waste
- ✗ Garden waste or lawn clippings
- ✗ Nappies
- ✗ Food
- ✗ Broken crockery and glassware

AUGUST 2024							SEPTEMBER 2024							OCTOBER 2024								
M	T	W	T	F	S	S	M	T	W	T	F	S	S	M	T	W	T	F	S	S		
			1	2	3	4	30					1					1	2	3	4	5	6
5	6	7	8	9	10	11	2	3	4	5	6	7	8	7	8	9	10	11	12	13		
12	13	14	15	16	17	18	9	10	11	12	13	14	15	14	15	16	17	18	19	20		
19	20	21	22	23	24	25	16	17	18	19	20	21	22	21	22	23	24	25	26	27		
26	27	28	29	30	31		23	24	25	26	27	28	29	28	29	30	31					

NOVEMBER 2024							DECEMBER 2024							JANUARY 2025							
M	T	W	T	F	S	S	M	T	W	T	F	S	S	M	T	W	T	F	S	S	
				1	2	3	30	31				1					1	2	3	4	5
4	5	6	7	8	9	10	2	3	4	5	6	7	8	6	7	8	9	10	11	12	
11	12	13	14	15	16	17	9	10	11	12	13	14	15	13	14	15	16	17	18	19	
18	19	20	21	22	23	24	16	17	18	19	20	21	22	20	21	22	23	24	25	26	
25	26	27	28	29	30		23	24	25	26	27	28	29	27	28	29	30	31			

FEBRUARY 2025							MARCH 2025							APRIL 2025							
M	T	W	T	F	S	S	M	T	W	T	F	S	S	M	T	W	T	F	S	S	
					1	2	31				1	2				1	2	3	4	5	6
3	4	5	6	7	8	9	3	4	5	6	7	8	9	7	8	9	10	11	12	13	
10	11	12	13	14	15	16	10	11	12	13	14	15	16	14	15	16	17	18	19	20	
17	18	19	20	21	22	23	17	18	19	20	21	22	23	21	22	23	24	25	26	27	
24	25	26	27	28			24	25	26	27	28	29	30	28	29	30					

MAY 2025							JUNE 2025							JULY 2025								
M	T	W	T	F	S	S	M	T	W	T	F	S	S	M	T	W	T	F	S	S		
				1	2	3	4	30					1				1	2	3	4	5	6
5	6	7	8	9	10	11	2	3	4	5	6	7	8	7	8	9	10	11	12	13		
12	13	14	15	16	17	18	9	10	11	12	13	14	15	14	15	16	17	18	19	20		
19	20	21	22	23	24	25	16	17	18	19	20	21	22	21	22	23	24	25	26	27		
26	27	28	29	30	31		23	24	25	26	27	28	29	28	29	30	31					

My collection day is:

My recycle bin collection week is: Blue Red

*Your yellow-lid recycling bin is collected fortnightly. When you have finished reading me, put me in your yellow-lid recycling bin.

FIND YOUR BIN COLLECTION DAY



Printed on recycled paper.

