



Temporary Local Planning Instrument 01/2019 (Flood Hazard)

Beaudesert Shire Planning Scheme 2007
Boonah Shire Planning Scheme 2006
Ipswich Planning Scheme 2006

Effective from 6 November 2019 and Superseded on 20 March 2020



**SCENIC RIM REGIONAL COUNCIL
TEMPORARY LOCAL PLANNING INSTRUMENT 01/2019 (FLOOD HAZARD)**

This is to certify that this is a true and correct copy of Temporary Local Planning Instrument 01/2019 (Flood Hazard) adopted on 21 October 2019 and commenced on 6 November 2019

A handwritten signature in blue ink, consisting of a circular flourish followed by a long, horizontal stroke.

Jon Gibbons
CHIEF EXECUTIVE OFFICER

Table of Contents

| | |
|---------------------------------------------------------------------------------------------------------|-----------|
| Preliminary..... | 2 |
| 1. Short Title..... | 2 |
| 2. Purpose of the Temporary Local Planning Instrument..... | 2 |
| 3. Duration of the Temporary Local Planning Instrument..... | 2 |
| 4. Application of the Temporary Local Planning Instrument..... | 2 |
| 5. Relationship with the Planning Schemes | 2 |
| 6. Implementation of the Temporary Local Planning Instrument..... | 6 |
| 7. Relationship with the Building Regulation 2006 | 6 |
| 8. Structure of the Temporary Local Planning Instrument | 6 |
| PART I: Beaudesert Shire Planning Scheme 2007 | 7 |
| Item 1: Assessment Table for the Development Constraints Overlay..... | 8 |
| Item 2: Overall Outcomes for the Development Constraints Overlay Code..... | 12 |
| Item 3: Specific Outcomes and Prescribed Solutions for the Development Constraints Overlay | 14 |
| Item 4: Schedule 1 - Defined Terms..... | 19 |
| Item 5: Flood and Landslide Hazard Overlay Maps | 21 |
| Part II: Boonah Shire Planning Scheme 2006 | 30 |
| Item 1: Assessment Table for the Flood Hazard Overlay..... | 31 |
| Item 2: Inclusion of assessment criteria for the Flood Hazard Overlay | 33 |
| Item 3: Inclusion of new flood-related explanatory terms..... | 40 |
| Item 4: Flood Hazard Overlay Map..... | 42 |
| Part III: Ipswich Planning Scheme 2006..... | 45 |
| Item 1: Flooding and Urban Stormwater Flow Path Area Overlay..... | 46 |
| Item 2: Assessment Categories and Relevant Assessment Criteria | 52 |
| Item 3: Definitions..... | 47 |
| Item 4: Flood Hazard Overlay Map..... | 48 |

Preliminary

1. Short Title

- 1.1 This Temporary Local Planning Instrument may be cited as *Temporary Local Planning Instrument 01/2019 (Flood Hazard)*.

2. Purpose of the Temporary Local Planning Instrument

- 2.1 The purpose of this Temporary Local Planning Instrument is to enhance the community's resilience to flood hazard by:
- a) suspending the operation of specific provisions in the planning schemes for the Local Government Area; and
 - b) applying new provisions affecting the operation of the planning schemes for the Local Government Area that either update or introduce a flood hazard overlay map and code where relevant.

3. Duration of the Temporary Local Planning Instrument

- 3.1 This Temporary Local Planning Instrument will have effect in accordance with section 23 of the *Planning Act 2016* for a period not exceeding 2 years from the commencement date of this Temporary Local Planning Instrument.
- 3.2 The commencement date of this Temporary Local Planning Instrument is 6 November 2019.

4. Application of the Temporary Local Planning Instrument

- 4.1 This Temporary Local Planning Instrument applies to the Scenic Rim Local Government Area.
- 4.2 This Temporary Local Planning Instrument suspends or otherwise affects the operation of the following planning schemes:
- a) Beaudesert Shire Planning Scheme 2007;
 - b) Boonah Shire Planning Scheme 2006;
 - c) Ipswich Planning Scheme 2006.

5. Relationship with the Planning Schemes

- 5.1 If a planning scheme to which this Temporary Local Planning Instrument applies under section 4.2 is inconsistent with this Temporary Local Planning Instrument, this Temporary Local Planning Instrument:
- a) prevails to the extent of the inconsistency; and

b) has effect in place of the planning scheme, but only to the extent of the inconsistency.

5.2 Tables 1, 2, and 3 identify in:

- a) Column 1, provisions of the relevant planning scheme;
- b) Column 2, the effect of the Temporary Local Planning Instrument on the provisions of the relevant planning scheme; and
- c) Column 3, the reference to the provisions overriding the relevant planning scheme in the Temporary Local Planning Instrument (TLPI), where applicable.

Table 1: Relationship with the *Beaudesert Shire Planning Scheme 2007*

| Column 1 Existing Provision | Column 2 Effect of the Temporary Local Planning Instrument | Column 3 TLPI Reference |
|-------------------------------------------------------------------------------------------------------------------------------------------------|--------------------------------------------------------------------------------------------------------------------------------------------------------------------------------------------------------------------------------------------------------------------------------------------------------------------------------------|------------------------------------|
| Chapter 4, Part 4, Table 4.4.4 - Assessment Table for the Development Constraints Overlay and associated footnotes | Suspend Table 4.4.4 and substitute with revised Table 4.4.4. | Part 1, Item 1 |
| In Chapter 4, Part 4, Section 4.4.7 - Overall Outcomes for the Development Constraints Code | Suspend Overall Outcomes and substitute with Overall Outcomes for the Development Constraints Code. | Part 1, Item 2 |
| In Chapter 4, Part 4, Table 4.4.8 - Specific Outcomes and Prescribed Solutions for the Development Constraints Overlay | Suspend SO1 - 5 and equivalent Table 4.4.8 and substitute with revised Table 4.4.8. | Part 1, Item 3 |
| Schedule 1, Part 3 - Defined Terms | Suspend the following terms in Schedule 1, Part 3 – Defined Terms: <ol style="list-style-type: none"> a) Average Recurrence Interval (ARI) b) Defined Flood Event (DFE); c) Flood Prone Land; d) Natural Hazard Management Area; and substitute with revised and additional Defined Terms. | Part 1, Item 4 |
| Chapter 3, Part 3, Table 3.3.11 – Specific Outcomes and Prescribed Solutions for the Rural Zone: SO40 and S40.1 and S40.2 | Suspend SO40 and S40.1 and S40.2. | Not applicable. |
| Chapter 3, Part 4, Table 3.4.11 - Specific Outcomes and Prescribed Solutions for the Kooralbyn Zone: SO34 and S34.1 and S34.2 | Suspend SO34 and S34.1 and S34.2. | Not applicable. |
| Chapter 3, Part 5, Table 3.5.8 - Specific Outcomes and Prescribed Solutions for the Bromelton State Development Area Zone: SO27 and S27.1-S27.5 | Suspend SO27 and S27.1-S27.5. | Not applicable. |
| Chapter 3, Part 7, Table 3.7.11 - Specific Outcomes and Prescribed Solutions for the Tamborine Mountain Zone: SO41 and S41.1 and S41.2 | Suspend SO41 and S41.1 and S41.2. | Not applicable. |

| Column 1 Existing Provision | Column 2 Effect of the Temporary Local Planning Instrument | Column 3 TLPI Reference |
|-----------------------------------------------------------------------------------------------------------------------------------------------------------------------------------------------------------------------------|------------------------------------------------------------------------------------------------------------------------------------------------------------------------------------------------------------------------------------------------------------------------------------|------------------------------------|
| Chapter 5, Part 3, Table 5.3.8 - Specific Outcomes and Prescribed Solutions for the Construction and Infrastructure Code: SO3 and S3.1 - S3.4; SO12 and S12.1 - S12.3; and Table 5.3.9, SO147 and S147.1; SO148 and S148.1. | Suspend: SO3 and S3.1 - S3.4; SO12 and S12.1 - S12.3; SO147 and S147.1; SO148 and S148.1. | Not applicable. |
| Schedule 5 - Planning Scheme Maps - Overlay Maps OV3.2a, 3.2b, 3.2.c and 3.2d (Development Constraints Overlay - Flood and Landslide Hazard) | Suspend Overlay Maps OV3.2a, 3.2b, 3.2.c and 3.2d and substitute with Overlay Maps OV3.2a, 3.2b, 3.2.c and 3.2d (Development Constraints Overlay Flood and Landslide Hazard) and Overlay Maps OV3.4a, 3.4b, 3.4c and 3.4d (Development Constraints Overlay Flood Hazard Category). | Part 1, Item 5 |

Table 2: Relationship with the *Boonah Shire Planning Scheme 2006*

| Column 1 Existing Provision | Column 2 Effect of the Temporary Local Planning Instrument | Column 3 TLPI Reference |
|----------------------------------------|-----------------------------------------------------------------------------------------------------------------------------------------------------------------------------------------------------------------------------------------------------------------------------------------------------------------------------------|------------------------------------|
| Not applicable. | In Part 5, include Division 14: Table 1. Assessment Categories and Relevant Assessment Criteria for the Flood Hazard Overlay - Making a Material Change of Use and Table 2 Assessment Categories and Relevant Assessment Criteria for the Flood Hazard Overlays - Other Development | Part 2, Item 1 |
| Not applicable. | In Part 5, include Division 15: Assessment Criteria for the Flood Hazard Overlay. | Part 2, Item 2 |
| Not applicable. | In Schedule 1, Part 2, include new terms: <ul style="list-style-type: none"> a) Afflux; b) Annual Exceedence; Probability (AEP); c) Defined Flood Event (DFE); d) Defined Flood Level (DFL); e) Flood Hazard Area; f) Habitable Room; g) Investigation Area. | Part 2, Item 3 |
| Not applicable. | Include new Overlay Map 6: Flood Hazard Overlay and Overlay Map 6a: Flood Hazard Category Overlay Map in the planning scheme overlay maps. | Part 2, Item 4 |

Table 3: Relationship with the Ipswich Planning Scheme 2006

| Column 1 Existing Provision | Column 2 Effect of the Temporary Local Planning Instrument | Column 3 TLPI Reference |
|------------------------------------------------------------------------------------------------------------------------------------------------------------------------------------------------------------------|----------------------------------------------------------------------------------------------------------------------------------------------------------------------------------------------------------------------------------------------------------------------------------------------------------------------------------------------------------------|----------------------------|
| Part 11 - Overlays, Division 4 - Development Constraint Overlays, Section 11.4.7 - Flooding and Urban Stormwater Flow Paths | Suspend Section 11.4.7 and replace with revised Section 11.4.7 – Flood Hazard Area including Table 11.4.1a - Specific Outcomes and Probable Solutions for Development in a Flood Hazard Area. | Part 3, Item 1 |
| In Part 11 – Overlays, Division 4 – Development Constraints Overlays, Table 11.4.3 Assessment Categories and Relevant Assessment Criteria for Development Constraints Overlays – Making a Material Change of Use | Suspend Table 11.4.3 and replace with revised Table 11.4.3 Assessment Categories and Relevant Assessment Criteria for Development Constraints Overlays – Making a Material Change of Use. | Part 3, Item 2 |
| In Part 11 – Overlays, Division 4 – Development Constraints Overlays, Table 11.4.4 Assessment Categories and Relevant Assessment Criteria for Development Constraints Overlays – Other Development | Suspend Table 11.4.4 and replace with Table 11.4.4 Assessment Categories and Relevant Assessment Criteria for Development Constraints Overlays – Other Development. | Part 3, Item 2 |
| Schedule 1, Division 2 - Administrative Terms | Suspend the terms 'Average Recurrence Interval (ARI)' and 'Adopted Flood Level' in Schedule 1, Division 2 and include the following terms: a) <i>Annual Exceedence Probability (AEP)</i> b) <i>Defined Flood Event (DFE)</i> c) <i>Defined Flood Level</i> d) <i>Flood Hazard Area</i> e) <i>Habitable Room</i> f) <i>Investigation Area</i> | Part 3, Item 3 |
| Part 12, Division 5 - Reconfiguring a Lot Code, Table 12.5.1 | Suspend the use of references to the 'Average Recurrence Interval' and replace with a reference to the equivalent 'AEP' in Table 12.5.1. | Not applicable. |
| Part 12, Division 5 - Reconfiguring a Lot Code, Table 12.5.1 | Suspend the use of references to the 'adopted flood level' and replace with 'defined flood level' in Table 12.5.1. | Not applicable. |
| Part 12, Division 6 - Residential Code, Specific Outcome 12(d) | Suspend the use of the term 'adopted flood level' and replace with 'defined flood level'. | Not applicable. |
| Part 12, Division 7 - Commercial and Industrial Code, Section 12.7.4, Specific Outcome (5)(c)(ii) | Suspend the use of the term 'adopted flood level' and replace with 'defined flood level'. | Not applicable. |
| Part 12, Division 7 - Commercial and Industrial Code, Section 12.7.8, Probable Solution (1)(e)(ii) | Suspend the use of the term 'adopted flood level' and replace with 'defined flood level'. | Not applicable. |
| Part 12, Division 15 - Earthworks Code, Section 12.15.4, Specific Outcome (8)(a) | Suspend the use of the term 'adopted flood level' and replace with 'defined flood level'. | Not applicable. |
| Planning Scheme Maps | Suspend the existing Flooding and Urban Stormwater Flow Path Areas Overlay Map and replace with the Flood Hazard Area Overlay Map (OM5) and Flood Hazard Category Overlay Map (OM5a). | Part 3, Item 4 |

6. Implementation of the Temporary Local Planning Instrument

- 6.1 The provisions in Parts 1, 2 and 3 of the Temporary Local Planning Instrument apply to the relevant planning schemes of the Scenic Rim Local Government Area.
- 6.2 For a proposal to be self-assessable, it must meet all the self-assessable outcomes of the relevant code in the Temporary Local Planning Instrument and any other applicable code. Where it does not meet all self-assessable outcomes, the proposal becomes assessable development and a development application is required.
- 6.3 Where a development application is triggered, only the specific acceptable outcome that the proposal fails to meet needs to be assessed against the corresponding assessable acceptable outcome or performance outcome. Other self-assessable outcomes that are met are not assessed as part of the development application.

7. Relationship with the *Building Regulation 2006*

- 7.1 For the purposes of Part 3, Section 13 of the *Building Regulation 2006*:
- a) the Defined Flood Event on the Flood Hazard Overlay Map constitute a Flood Hazard Area;
 - b) the Defined Flood Level is a 1 percent Annual Exceedance Probability (AEP) flood event; and
 - c) this TLPI provides for finished floor levels of habitable rooms to be 500mm above the defined flood level.

8. Structure of the Temporary Local Planning Instrument

- 8.1 This Temporary Local Planning Instrument is separated into a section for each planning scheme in operation in the Local Government Area (Parts 1, 2 and 3). Each Part contains the planning provisions to replace the suspended provisions of the existing planning schemes, including:
- a) a Table of Assessment;
 - b) a Flood Hazard Overlay Code;
 - c) Overlay Maps; and
 - d) Explanatory Definitions.

Note: The parts of the planning schemes that are suspended by the Temporary Local Planning Instrument are shown in Section 5 of this Temporary Local Planning Instrument.

PART I: Beaudesert Shire Planning Scheme 2007

Item 1: Assessment Table for the Development Constraints Overlay

This Temporary Local Planning Instrument suspends the operation of Chapter 4, Part 4, Table 4.4.4 - Assessment Table for the Development Constraints Overlay and replaces it with the following:

Table 4.4.4 Assessment Table for the Development Constraints Overlay

| Column 1 Use or Use Class | Column 2 Assessment Category | Column 3 Relevant Assessment Criteria |
|------------------------------------------------------|--------------------------------------------------------------------------------------------------------------------------------------------------------------------------------------------------------------------------------------------------------------------------------------------------------------------------------------------------------------------------------------------------------------------------------------------------------------------------------------------------------------------------------------------------------------------------------------------------------------------------------------------------------------------------------------------------------------------------------------------------------------------------------------------------------------------------------------------------------------------------------------------------------------------------------------------------------------------------------------------------------------------------------------------------------------------------------------------------------------------------------------------------------------------------------------------------------------------------------------------------------------------------------------------------------------------------------------------------------------------------------------------------------------------------|---------------------------------------------------------------------------------------------------------------------------------|
| Material Change of Use for a House or Dual Occupancy | <p>Exempt, if located -</p> <ul style="list-style-type: none"> (a) in an approved Building Envelope (except where in a Flood Hazard Area); or (b) in a Low Bushfire Hazard Area; or (c) in a High Bushfire Hazard Area or Medium Bushfire Hazard Area on a lot less than 2000m² in area; or (d) in an Agricultural Protection Area. <p>Code-assessable, if—</p> <ul style="list-style-type: none"> (a) not Exempt; and (b) the use is located— <ul style="list-style-type: none"> (i) in a High Bushfire Hazard Area or Medium Bushfire Hazard Area on a lot greater than 2000m²; or (ii) in the Flood Hazard Area; or (iii) in a Medium Landslide Hazard Area, a High Landslide Hazard Area or a Landslide Hazard Investigation Area; (iv) or in an Extractive/Mineral Resource Area, Buffer Area, or Key Resource Area; or (v) adjoining a Haul Route; or (vi) in an Agriculture Protection Area; or (vii) in a View Protection Area; or (viii) in a Water Supply Catchment Area; or (ix) within 500 metres of a Water Supply Source or Buffer; or (x) within 100 metres of a Defence Establishment (the Defences Establish Buffer Area); or (xi) on a lot adjoining a site containing an Airfield; or | <p>If Exempt—None applicable.</p> <p>If Code-assessable—Development Constraints Overlay Code (section 4.4.5).</p> |

| Column 1 Use or Use Class | Column 2 Assessment Category | Column 3 Relevant Assessment Criteria |
|-------------------------------------------------------------------------------------------------------|--------------------------------------------------------------------------------------------------------------------------------------------------------------------------------------------------------------------------------------------------------------------------------------------------------------------------------------------------------------------------------------------------------------------------------------------------------------------------------------------------------------------------------------------------------------------------------------------------------------------------------------------------------------------------------------------------------------------------------------------------------------------------------------------------------------------------------------------------------------------------------------------------------------------------------------------------------------------------------------------------------------------------------------------------------------------------------------------------------------------------------------------------------------------------------------------------------------------------------------------------------------------------------------------------------------------------------------------------------------------------------------------------------------------------------------------------------------------------------------------------------------------------------------------------------------------------------------------------------------------------------------------------------------------|---------------------------------------------------------------------------------------------------------------------------------------------------------------------------------------------------------------------------------------------------------|
| | (xii) in a Buffer Area. | |
| Material Change of Use for all Defined or Undefined Uses except Road, Dual Occupancy, House and Park. | <p>Exempt, if the use is —</p> <ul style="list-style-type: none"> (a) Agriculture or Animal Husbandry in the Countryside Precinct (except where in a Flood Hazard Area); or (b) in an approved building envelope (except where in a Flood Hazard Area); or (c) Agriculture, Animal Husbandry or Roadside Stall and not involving Building Work in a Flood Hazard Area; or (d) in a Low Bushfire Hazard Area. <p>Self-assessable, if the use is -</p> <ul style="list-style-type: none"> (a) Not Exempt; and (b) Caretaker's Residence, Managers/Workers House or Roadside Stall (except where in a Flood Hazard Area); or (c) Agriculture, Animal Husbandry or Roadside Stall and involving buildings or structures in a Flood Hazard Area. <p>Code-assessable, if—</p> <ul style="list-style-type: none"> (a) not Exempt or Self-Assessable; and (b) the use is located— <ul style="list-style-type: none"> (i) in a High Bushfire Hazard Area or Medium Bushfire Hazard Area; or (ii) in the Flood Hazard Area; or (iii) in a Medium Landslide Hazard Area, a High Landslide Hazard Area or a Landslide Hazard Investigation Area; or (iv) in an Extractive/Mineral Resource Area, Buffer Area, or Key Resource Area; or (v) adjoining a Haul Route; or (vi) in an Agriculture Protection Area; or (vii) in a View Protection Area; or (viii) in a Water Supply Catchment Area; or (ix) within 500 metres of a Water Supply Source or Buffer; or | <p>If Exempt—None applicable.</p> <p>If Self-assessable – Solutions S1.4, S2.1 and S3.1 of Table 4.4.8 - Development Constraints Overlay Code.</p> <p>If Code-assessable—Development Constraints Overlay Code (section 4.4.5).</p> |

| Column 1 Use or Use Class | Column 2 Assessment Category | Column 3 Relevant Assessment Criteria |
|--------------------------------------------------------------------------------------------------------------------------|------------------------------------------------------------------------------------------------------------------------------------------------------------------------------------------------------------------------------------------------------------------------------------------------------------------------------------------------------------------------------------------------------------------------------------------------------------------------------------------------------------------------------------------------------------------------------------------------------------------------------|---------------------------------------------------------------------------------------------------------------------------------|
| | <ul style="list-style-type: none"> (x) within 100 metres of a Defence Establishment (the Defences Establish Buffer Area); or (xi) on a lot adjoining a site containing an Airfield; or (xii) in a Buffer Area. | |
| Operational work being for the clearing of vegetation to which the <i>Vegetation Management Act 1999</i> does not apply. | <p>Exempt, if Exempted Clearing.</p> <p>Code-assessable, if—</p> <ul style="list-style-type: none"> (a) not Exempt; and (b) located— <ul style="list-style-type: none"> (i) in a Water Supply Catchment Area; or (ii) within 500 metres of a Water Supply Source or Buffer; or (iii) in a Flood Hazard Area. | <p>If Exempt—None applicable.</p> <p>If Code-assessable—Development Constraints Overlay Code (section 4.4.5).</p> |
| Operational work being for Filling or Excavation exceeding 10m ³ . | <p>Exempt, if not Code-assessable.</p> <p>Code-assessable, if—</p> <ul style="list-style-type: none"> (a) not located in an approved building envelope; and (b) located— <ul style="list-style-type: none"> (i) in a Flood Hazard Area; or (ii) in a Medium Landslide Hazard Area, a High Landslide Hazard Area or a Landslide Hazard Investigation Area; or (iii) in a View Protection Area; or (iv) in a Water Supply Catchment Area; or (v) within 500 metres of a Water Supply Source or Buffer. | <p>If Exempt—None applicable.</p> <p>If Code-assessable—Development Constraints Overlay Code (section 4.4.5).</p> |
| Reconfiguring a Lot. | <p>Exempt, if not Code-assessable.</p> <p>Code-assessable, if involves land—</p> <ul style="list-style-type: none"> (a) in a High Bushfire Hazard Area or Medium Bushfire Hazard Area; or (b) in a Flood Hazard Area; or (c) in a Medium Landslide Hazard Area, a High Landslide Hazard Area or a Landslide Hazard Investigation Area; or (d) in an Extractive/ Mineral Resource Area or Key Resource Area; or (e) in an Agriculture Protection Area; or (f) in a Water Supply Catchment Area; or (g) within 500 metres of a Water Supply | <p>If Exempt—None applicable.</p> <p>If Code-assessable—Development Constraints Overlay Code (section 4.4.5).</p> |

| Column 1 Use or Use Class | Column 2 Assessment Category | Column 3 Relevant Assessment Criteria |
|---------------------------------|----------------------------------------------------------------------------------------------------------------------------------------------------------------------------------------|---------------------------------------------|
| | Source or Buffer; or (h) within 100 metres of a Defence Establishment (the Defence Establishment Buffer Area); or (i) adjacent to an Airfield; or (j) in a Buffer Area. | |

Item 2: Overall Outcomes for the Development Constraints Overlay Code

This Temporary Local Planning Instrument suspends Chapter 4, Part 4, Section 4.4.7 - Overall Outcomes for the Development Constraints Overlay Code and replaces it with the following:

4.4.7 Overall Outcomes for Development Constraints Code

- (1) Development which may be adversely affected by a natural hazard in a substantial manner, is restricted from locating in an area where the likelihood of a natural hazard event occurring is significant.
- (2) Development in a natural hazard management area is compatible with the nature of the natural hazard.
- (3) Development siting, layout, and access respond to the risk of the natural hazard and minimises risk to personal safety.
- (4) Development is resilient to natural hazard events by ensuring siting and design accounts for the potential risks of natural hazards to property.
- (5) Development supports, and does not unduly burden disaster management response or recovery capacity and capabilities.
- (6) Development directly, indirectly and cumulatively avoids an unacceptable increase in severity of the natural hazards and does not significantly increase the potential for damage on the site or to other properties.
- (7) Development avoids the release of hazardous materials as a result of a natural hazard event.
- (8) Natural processes and the protective function of landforms and/or vegetation are maintained in natural hazard areas.
- (9) Impacts from natural hazards on existing development are minimised.
- (10) Development which could be impacted by the effect of other development is provided with adequate buffers.
- (11) The exploitation of regionally and local significant extractive/mineral resource deposits is protected from the encroachment of development which may compromise the ability to extract, process and transport the resource material.
- (12) Extractive industry operations are managed to ensure that the environmental impacts generated by such operations are within acceptable limits.
- (13) Valuable rural land is protected from alienation by incompatible development.
- (14) Important view-sheds are protected from the impacts of incompatible development.
- (15) Water supply catchment areas are protected to ensure that water quality in the catchment is not contaminated by activities within the catchment.

- (16) Development in a Water Cycle Investigation Area is extended only where it can be readily supported by appropriate infrastructure and not adversely impact on the operational capacity of existing or future planned water cycle infrastructure.
- (17) Development for the reconfiguration of a lot minimizes the adverse effects from natural or other hazards including flooding, bushfire, slope instability, contaminated sites and sites producing significant levels of emissions.
- (18) Development for the reconfiguration of a lot does not create lots that increase the risk of natural hazards affecting the potential uses for a lot.
- (19) Development in proximity to a Commonwealth defence facility does not constrain activities within the facility's site.

Item 3: Specific Outcomes and Prescribed Solutions for the Development Constraints Overlay

This Temporary Local Planning Instrument suspends Chapter 4, Part 4, Table 4.4.8 - Development Constraints Overlay Code for Natural Hazards Management - Flood (SO1-SO5 and S1.1-1.4; S2.1-2.2; S3.1-3.2; S4.1; S5.1) and replaces the Specific Outcomes and Prescribed Solutions with the following:

Note: The Development Constraints Overlay Code in the Beaudesert Shire Planning Scheme 2007 continues to apply from the existing SO6 (Natural Hazards Management - Landslide).

| Column 1 Specific Outcomes | | Column 2 Prescribed Solutions | |
|------------------------------------|---------------------------------------------------------------------------------------------------------------------------------------------------------------------------------------------------------------------------------------------------------------------------------------------------------------------------------------|----------------------------------|--------------------------------------------------------------------------------------------------------------------------------------------------------------------------------------------------------------------------------------------------------------------------------------------------------------------------------------------------------------------------------------------------------------------------------------------------------------------------------------------------------------------------------------------------------------------------------------------------------------------------------------------------------------------------------------------------------------------------------------------------------------------------------------------------------------------------------------------------------------------------------------------------------------------------------------------------------------------------------------------------------------------|
| Natural Hazards Management - Flood | | | |
| SO1 | <p>Development siting, layout and access:</p> <p>(1) responds to flooding potential;</p> <p>(2) maintains personal safety at all times; and</p> <p>(3) responds to the flood hazard category on the site.</p> <p>Note - Flood Hazard Category is shown on the Development Constraints - Flood Hazard Category Overlay Map.</p> | S1.1 | <p>Development:</p> <p>(1) is not located on land in a <i>flood hazard area</i>; or</p> <p>(2) where the development cannot be located on land outside the <i>flood hazard area</i>, all floor levels of habitable rooms are elevated a minimum of 500mm above the <i>defined flood level</i>.</p> <p>Note - If part of the site is outside the flood hazard area, this is the preferred location for development.</p> <p>Note - Building work in a designated flood hazard area must meet the requirements of the relevant building assessment provisions under the Building Act 1975.</p> <p>Editor's Note - The defined flood level may be obtained from a Council property flood search where the property is located within the Defined Flood Area on</p> <p>A site based flood study is required that investigates the impact of the development on the floodplain and demonstrates compliance with the Specific Outcome where a flood level is not available (Investigation Area).</p> |
| | | S1.2 | <p>Development provides for a road and/or pathway layout that ensures residents are not physically isolated by the <i>defined flood event</i> and provides a safe and clear evacuation route by:</p> <p>(1) locating entry points into the development are located outside the <i>flood hazard area</i>;</p> <p>(2) ensuring all roads in the development are located outside the <i>flood hazard area</i>;</p> <p>(3) avoiding cul-de-sacs or other non-permeable layouts; and</p> <p>(4) providing direct and simple routes to main carriageways.</p> |
| | | S1.3 | <p>Development ensures that all buildings have vehicle and/or pedestrian evacuation routes outside the <i>flood hazard area</i> to facilitate egress from the site.</p> |

| Column 1 Specific Outcomes | | Column 2 Prescribed Solutions | |
|-------------------------------|------------------------------------------------------------------------------------------------------------------------------------------------------------------------------------------|----------------------------------|------------------------------------------------------------------------------------------------------------------------------------------------------------------------------------------------------------------------------------------------------------------------------------------------------------------------------------------------------------------------------------------------------------------------------------------------------------------------------------------------------------------------------------------------------------------------------------------------------------------------------------------------------------------------------------------------------------------------------------------------------------------------------------------|
| | | S1.4 | <p>Non-residential buildings and structures allow for flow through of flood waters on the ground floor.</p> <p>Editor's Note - <i>The relevant building assessment provisions under the Building Act 1975 apply to all building work within the Flood Hazard Area and need to take account of the flood potential within the area.</i></p> |
| | | S1.5 | <p>Development either: (1) does not create additional lots that are located in the <i>flood hazard area</i>; or (2) creates lots that incorporate a building envelope outside the <i>flood hazard area</i>.</p> <p>Editor's note - <i>If part of the site is outside the Flood Hazard Area, this is the preferred location for all lots (excluding park or other relevant open space and recreation lots).</i></p> <p>Editor's Note - <i>Buildings subsequently developed on the lots created will need to comply with the relevant building assessment provisions under the Building Act 1975</i></p> |
| | | S1.6 | <p>There is no intensification of residential uses within flood affected areas on land situated below the <i>defined flood event</i>.</p> <p>Editor's note - <i>If part of the site is outside the Flood Hazard Area, this is the preferred location for all buildings.</i></p> |
| | | S1.7 | <p>Where the site contains or is within 100m of a floodable waterway, hazard warning signage and depth indicators are provided at key hazard points, such as at floodway crossings or entrances to low-lying reserves.</p> |
| SO2 | <p>Development is resilient to flood events by ensuring design, built form and materials stored on site do not increase the potential for damage on the site or to other properties.</p> | S2.1 | <p>Materials stored on site: (1) are readily able to be moved in a flood event; and (2) where capable of creating a safety hazard by being shifted by floodwaters, are contained in order to minimise movement in times of flood.</p> <p>Note - <i>Businesses and Animal Husbandry or Cropping uses should ensure that they have the necessary continuity plans in place to account for the potential need to relocate property prior to a flood event (e.g. allow enough time to transfer stock to the upstairs level of a building, an area not affected by flood, or off site).</i></p> <p>Note - <i>Queensland Government Fact Sheet 'Repairing your house after a flood' provides information about water resilient products and building techniques.</i></p> |
| SO3 | <p>Development avoids the release of hazardous materials into floodwaters.</p> | S3.1 | <p>Development: (1) involving materials manufactured or stored on site are not hazardous or noxious, or comprise of materials that may cause a detrimental effect on the</p> |

| Column 1 Specific Outcomes | | Column 2 Prescribed Solutions | |
|-------------------------------|---------------------------------------------------------------------------------------------------------------------------------------------------------------------------------------------------------------------------------------------------------------------------------------------------------------------------------------------------------------------------------------------------------------------------------------------------------------------------------------------------------------------------------------------------------------------|----------------------------------|------------------------------------------------------------------------------------------------------------------------------------------------------------------------------------------------------------------------------------------------------------------------------------------------------------------------------------------------------------------------------------------------------------------------------------------------------------------------------------------------------------------------------------------------------------------------------------------------------------------------------------------------------------------------------------------------------------------------------------------------------------------------------------------------------------------------------------------------------------------------------|
| | | | <p>environment if discharged in a flood event; or</p> <p>(2) involving the manufacture or storage of hazardous materials ensures structures are:</p> <p>(a) located above the defined flood level; or</p> <p>(b) designed to prevent the intrusion of floodwaters; or</p> <p>(3) where a defined flood level is not available, ensures hazardous materials and their manufacturing equipment are:</p> <p>(a) located on the highest part of the site to enhance flood immunity; and</p> <p>(b) designed to prevent the intrusion of floodwaters.</p> <p><i>Editor's Note - Refer to the Work Health and Safety Act 2011 and associated Regulation and Guidelines, the Environmental Protection Act 1994 and the relevant building assessment provisions under the Building Act 1975 for requirements related to the manufacture and storage of hazardous substances.</i></p> |
| SO4 | Development supports, and does not burden, disaster management response or recovery capacity and capabilities. | S4.1 | <p>Development does not:</p> <p>(1) increase the number of people calculated to be at risk from flooding; or</p> <p>(2) increase the number of people likely to need evacuation; or</p> <p>(3) shorten flood warning times; or</p> <p>(4) impact on the ability of traffic to use evacuation routes, or unreasonably increase traffic volumes on evacuation routes.</p> |
| SO5 | <p>Development involving community facilities or infrastructure:</p> <p>(1) remains functional to serve community need during and immediately after a flood event;</p> <p>(2) is designed, sited and operated to avoid adverse impacts on the community or the environment due to the impacts of flooding on infrastructure, facilities or access and egress routes;</p> <p>(3) retains essential site access during a flood event; and</p> <p>(4) is able to remain functional even when other infrastructure or services may be compromised in a flood event.</p> | S5.1 | <p>Any components of infrastructure that are likely to fail to function or may result in contamination when inundated by flood, such as electrical switch gear and motors, telecommunications connections, or water supply pipeline air valves, are:</p> <p>(1) located above the <i>defined flood level</i>; and</p> <p>(2) designed and constructed to exclude floodwater infiltration.</p> |
| | | S5.2 | Infrastructure is designed and constructed to resist hydrostatic and hydrodynamic forces as a result of inundation by flood. |
| | | S5.3 | Development for community services activities or infrastructure activities is located in an area above the following |

| Column 1 Specific Outcomes | | Column 2 Prescribed Solutions | |
|-------------------------------|---------------------------------------------------------------------------------------------------------------------------------------------------------------------------------------------|----------------------------------|------------------------------------------------------------------------------------------------------------------------------------------------------------------------------------------------------------------------------------------------------------------------------------------------------------------------------------------------------------------------------------------------------------------------------------------------------------------------------------------------------------------------------------------------------------------------------------------------------------------------------------------------------------------------------------------------------------------------------------------------------------------------------------------------------------------------------------------|
| | | | <p>flood levels and has a freeboard of 300mm:</p> <p>(1) 0.5 per cent Annual Exceedance Probability (AEP) for:</p> <ul style="list-style-type: none"> (a) emergency shelters (b) police facilities (c) sewerage treatment plant (d) Aged Persons Accommodation (e) Community Care Centre (f) Community use involving the storage of valuable records, or items of historic or cultural significance (e.g. archives, museums, galleries, libraries) <p>(2) 0.2 per cent AEP for:</p> <ul style="list-style-type: none"> (a) Corrective Institution (b) Emergency services (c) power stations (d) Major electrical infrastructure and switch yards. (e) Substation (f) water treatment plant (g) Hospital |
| | | S5.4 | For all other development being an infrastructure activity not listed in S5.3 , such development can function effectively during and immediately after flood events. |
| | | S5.5 | For all other development being a community services activity not listed in S5.3 , such development is not located on land inundated during a <i>defined flood event</i> . |
| | | S5.6 | <p>The following uses have direct access to low hazard evacuation routes as defined in Table 1: Low Hazard Evacuation Routes:</p> <ul style="list-style-type: none"> (1) <i>Community residence</i>; (2) <i>Emergency services</i>; (3) <i>Hospitals</i>; (4) <i>Residential care facility</i>; (5) <i>Retirement facility</i>; (6) <i>Child care centre</i>; (7) <i>Substation</i>; and (8) <i>Utility installations</i>. |
| SO6 | Development directly, indirectly and cumulatively avoids any increase in water flow, velocity or flood level and does not increase the potential for damage on site or on other properties. | S6.1 | <p>Development on land in a defined flood event either:</p> <ul style="list-style-type: none"> (1) do not involve a net increase in filling greater than 50m³ where located in a non-urban area; or (2) do not result in any reductions of on-site flood storage capacity and contain within the subject site any changes to |

| Column 1 Specific Outcomes | | Column 2 Prescribed Solutions | |
|-------------------------------|--|----------------------------------|------------------------------------------------------------------------------------------------------------------------------------------------------------------------------------------------------------------------------------------------------------------------------------------------------------------------------------------------------------------------------------------------------------------------------------------------------------------------------------------------------------------------------------------------------------------------------------------|
| | | | depth, duration and velocity of floodwaters; or (3) do not change flood characteristics outside the subject site in ways that result in: (a) loss of flood storage; (b) loss of/changes to flow paths; (c) acceleration or retardation of flows; and (4) any reduction in flood warning times elsewhere on the floodplain. |
| | | S6.2 | Where development is located in an area affected by a <i>defined flood event</i> , a hydraulic and hydrology report, prepared by a suitably qualified person, demonstrates that the development: (1) maintains the flood storage capacity on the subject site; (2) does not increase the volume, velocity, concentration or flow path alignment of stormwater flow across sites upstream, downstream or in the general vicinity of the subject site; and (3) does not increase stormwater ponding on sites upstream, downstream or in the general vicinity of the subject site. |
| | | S6.3 | Works in urban areas associated with the proposed development do not involve: (1) any physical alteration to a watercourse or floodway including vegetation clearing; and/or (2) a net increase in filling (including berms / mounds). <i>Editor's note - Berms/mounds are considered to be an undesirable built form outcome and are not supported.</i> |

Table 1: Low Hazard Evacuation Routes

| Criteria | Degree of Flood Hazard | | | |
|-------------------------|----------------------------------------------------------------------------------------------------------------------|----------------------------------------------------------------------------------------|-------------------------------------------------------------------------------------------------------------|-------------------------------------|
| | Low | Medium | High | Extreme |
| Wading ability | If necessary children and the elderly could wade. (Generally, safe wading velocity depth product is less than 0.25). | Fit adults can wade. (Generally, safe wading velocity depth product is less than 0.4). | Fit adults would have difficulty wading. (Generally, where wading velocity depth product is less than 0.6.) | Wading is not an option. |
| Evacuation distances | <200 metres | 200-400 metres | 400-600 metres | >600 metres |
| Maximum Flood Depths | <0.3 metres | <0.6 metres | <1.2 metres | >1.2 metres |
| Maximum Flood Velocity | <0.4 metres per second | <0.8 metres per second | <1.5 metres per second | >1.5 metres per second |
| Typical means of egress | Sedan | Sedan early, but 4WD or trucks later. | 4WD or trucks only in early stages, boats or helicopters | Large trucks, boats or helicopters. |

Item 4: Schedule 1 - Defined Terms

This Temporary Local Planning Instrument:

1. suspends the following terms in Schedule 1, Part 3 – Defined Terms:
 - a) Average Recurrence Interval (ARI);
 - b) Defined Flood Event (DFE);
 - c) Flood Prone Land;
 - d) Natural Hazard Management Area; and
2. includes the following terms:

Annual Exceedence Probability (AEP) refers to the probability of a flood event occurring in any year. The probability is expressed as a percentage and is determined by undertaking a flood model for a site or area. A Defined Flood Event with a 1% AEP is a flood that is calculated to have a 1% chance of occurring in any one year. The 1% AEP is also known as the 1 in 100 year Average Recurrence Interval (ARI) or Q100 event and is commonly used for urban planning purposes as the line of acceptable risk.

Defined Flood Event (DFE) is a flood event with a 1% AEP. The 1% AEP has been determined as being the level of acceptable risk for development to occur. Where flood modelling based on the 1% AEP has been undertaken in the Scenic Rim, the Defined Flood Event is the area shown on the Development Constraints – Flood and Landslide Hazard Overlay Map as being within the Defined Flood Event (DFE).

Defined Flood Level is the level on a site based on a 1% AEP flood event. The Defined Flood Level is measured in height above mean sea level (AHD). The Defined Flood Level is the minimum planning level that development must adhere to in a given location to minimise the risk of potential flooding.

Note: Where land is located in the Investigation Area of the Development Constraints – Flood and Landslide Hazard Overlay Map, a Defined Flood Level based on the 1% AEP flood event may not be available. A flood investigation undertaken by a suitably qualified professional may be required to determine the Defined Flood Level to ensure compliance with the relevant building assessment provisions under the Building Act 1975.

Flood Hazard Area means the area that is shown either in the Defined Flood Event or Flood Investigation Area on the Development Constraints – Flood and Landslide Hazard Overlay Map.

Floodway means the area of a floodplain where a significant discharge of stormwater occurs during a flood.

Habitable Room has the same meaning as in the Building Code of Australia.

Investigation Area means the area that is shown on the Development Constraints – Flood and Landslide Hazard Overlay Map as being within the Investigation Area. The Investigation Area is based on the Queensland Reconstruction Authority's Interim Floodplain Assessment Overlay (IFAO) maps. The IFAO maps were prepared using a range of existing Statewide datasets to determine floodplain maps where floodplain mapping did not exist. The mapping is based on various landform datasets that represent or indicate previous inundation. The spatial extent of the mapping identifies an area of interest for potential flooding impacts. The mapping is not based on a particular Annual Exceedence Probability (AEP) event or Defined Flood Event (DFE) such as a 1% AEP, nor does it represent the Probable Maximum Flood (PMF), which is commonly derived through detailed flood studies to identify the extent of the floodplain. The mapping does not include or specify a flood level or flood flow velocity. The 'Investigation Area' may trigger the requirement for a flood investigation to be undertaken on the site to determine the Defined Flood Level.

Natural Hazard Management Area means an area that has been defined for the management of a hazard (flood, bushfire or landslide) but may not reflect the full extent of the area that may be affected by the hazard (e.g. land above the 1% AEP may flood during a larger flood event).

Item 5: Flood and Landslide Hazard Overlay Maps

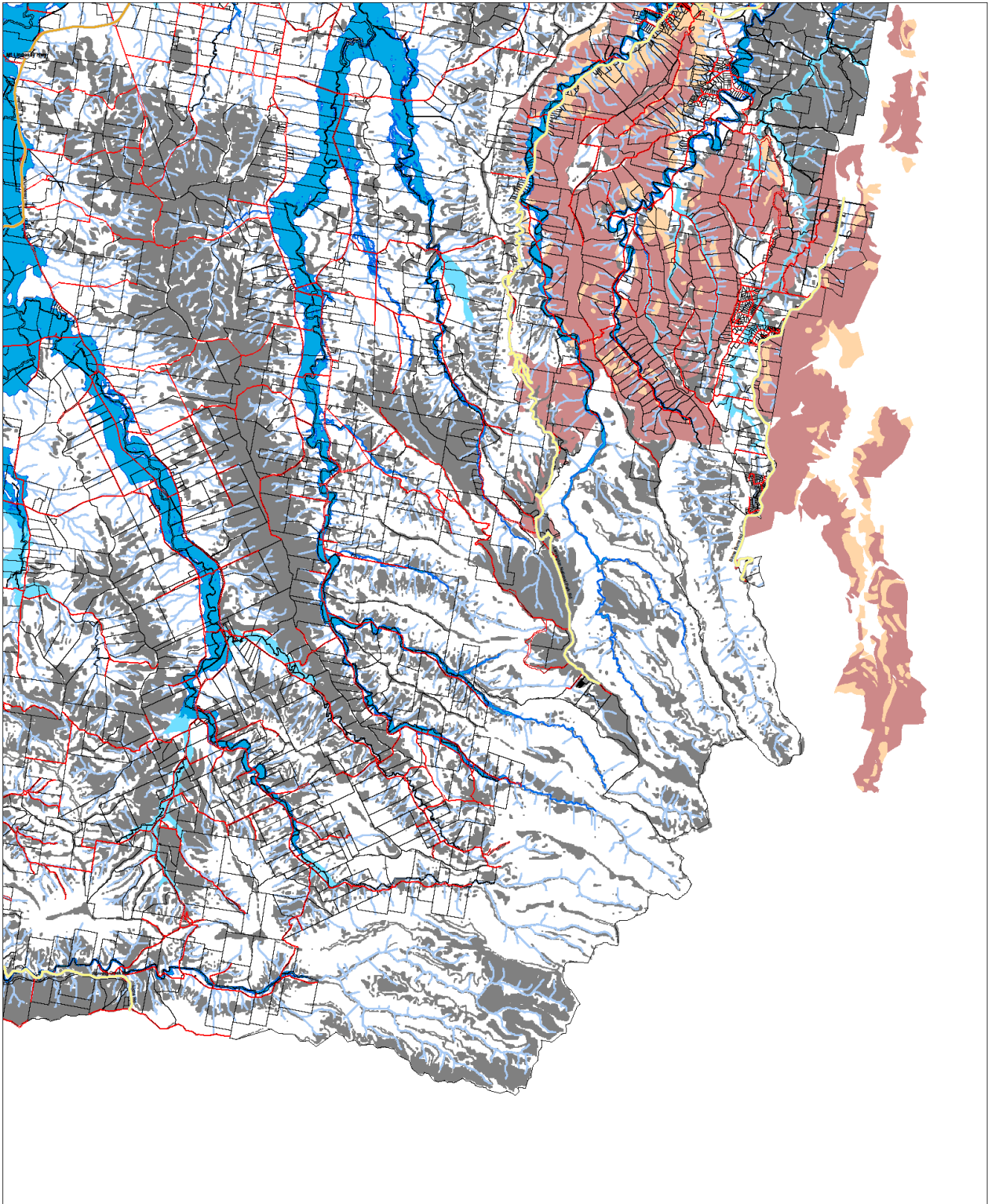
This Temporary Local Planning Instrument suspends Overlay Maps OV3.2a, 3.2b, 3.2c and 3.2d and replaces them with the following maps:

- OV3.2a, 3.2b, 3.2c and 3.2d (Flood Hazard Area); and
- OV3.4a, 3.4b, 3.4c and 3.4d (Flood Hazard Category Area).

Development Constraints Overlay - Flood and Landslide Hazard



OV 3.2B



Beaunesert Planning Scheme
Integrated Planning Act 1997

THIS DOCUMENT IS A PRELIMINARY DRAFT AND SHOULD NOT BE USED FOR DECISIONS OR RELIED UPON IN BREACH OF THE PRECEDENT LAWS.

GENERAL INFORMATION
State Information
Council Boundary
Not Used on Overlay 1.1
Not Used on Overlay E.1
Cultural Heritage Overlay

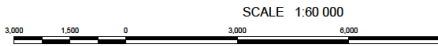
INFRASTRUCTURE OVERLAY
Major Transport Route
State Controlled
Local Road of Significance
Other Transport Routes
Electricity Network
Substation Site
Power Line >220KV
Power Line 153-275KV
Recreation Trail

NATURE CONSERVATION OVERLAY
Conservation Significance
Ecological Corridor
Riparian Sensitive Area
Wildlife Heritage Area
Conservation Estate Area
Regional Nature Conservation Area
Local Nature Conservation Area
Conservation Significance
Landscape Amenity Area
Vegetation Management Area

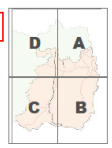
DEVELOPMENT CONSTRAINTS OVERLAY
High Bushfire Hazard
Medium Bushfire Hazard
Low Bushfire Hazard
High Landslide Hazard
Medium Landslide Hazard
Low Landslide Hazard
High Flood Hazard
Medium Flood Hazard
Low Flood Hazard

Other Constraints
Agriculture Production Area
New Protection Area
Water Supply Catchment Area
Water Supply Source
Extraverted Mineral Resource
Key Resource Area
Defence Establishment
Water Cycle Investigation Area

CHARACTER PLACES OVERLAY
Character Places Area
CATCHMENT MANAGEMENT STRATEGIES AND WETLANDS OVERLAY
Stream Order Category 'A'
Stream Order Category 'B'
Stream Order Category 'C'
Tidal Influence Area
Wetlands
Pollutant Load Risk - Low
Pollutant Load Risk - Medium
Pollutant Load Risk - High
Riparian Habitat Presence



SCALE 1:60 000
Temporary Local Planning Instrument 01/2019
6 November 2019



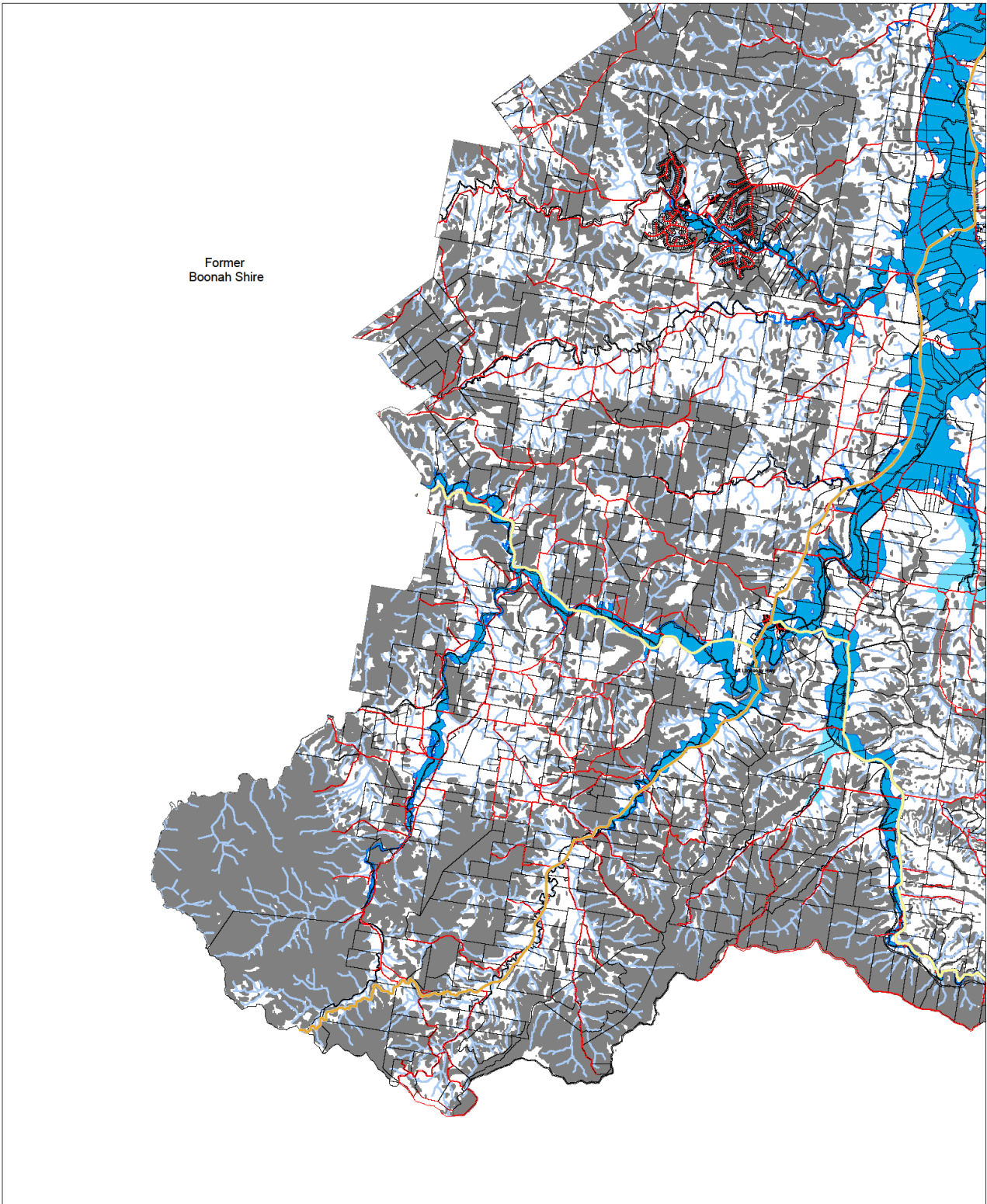
OV 3.2B

Development Constraints Overlay - Flood and Landslide Hazard



OV 3.2C

Former Boonah Shire



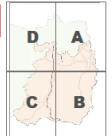
Beaudesert Planning Scheme
Integrated Planning Act 1997
Adm 45 006 234 251

DATA MUST NOT BE USED FOR DIRECT NAVIGATION OR BE USED IN SEARCH OF THE PRIVACY LAWS

SCALE 1:60 000



Temporary Local Planning Instrument 01/2019
6 November 2019



GENERAL INFORMATION
Base Information
Proprietary Boundary
Not Used on Overlay 1.1
Major Road
Minor Road
Other Road
Not Used on Overlay 6.1
Stream
CULTURAL HERITAGE OVERLAY
Cultural Heritage Overlay

INFRASTRUCTURE OVERLAY
Major Transport Route
Side Road
Local Road of Significance
Interlocal Road
Other Transport Routes
State Controlled
Local Road of Significance
Roadside Access
Public Transport Route
Recreation Trail

NATURE CONSERVATION OVERLAY
Aviation Facility and Buffer
Water Cycle Infrastructure
Water Treatment Plant
Water Reservoir
Substation
Power Line >275kV
Power Line 132-275kV
Power Line <132kV
Ecological Corridor
Wetland Sensitive Area
World Heritage Area
Conservation Estate Area
Regional Nature Conservation Area
Local Nature Conservation Area
Conservation Significance
Landscape Amenity Area
Vegetation Management Area

DEVELOPMENT CONSTRAINTS OVERLAY
Boulder Hazard Area
High Boulder Hazard
Medium Boulder Hazard
Flood
High Landslide Hazard
Medium Landslide Hazard
Low Landslide Hazard
Investigation Area
High Landslide Hazard Investigation Area
Medium Landslide Hazard Investigation Area
Low Landslide Hazard Investigation Area
Flood Hazard Category
High Hazard
Medium Hazard
Low Hazard

Other Constraints
Agriculture Protection Area
View Protection Area
Water Supply Catchment Area
Extractive Mineral Resource
Buffer Area
Key Resource Area
Defence Establishment
Airfield
Water Cycle Investigation Area

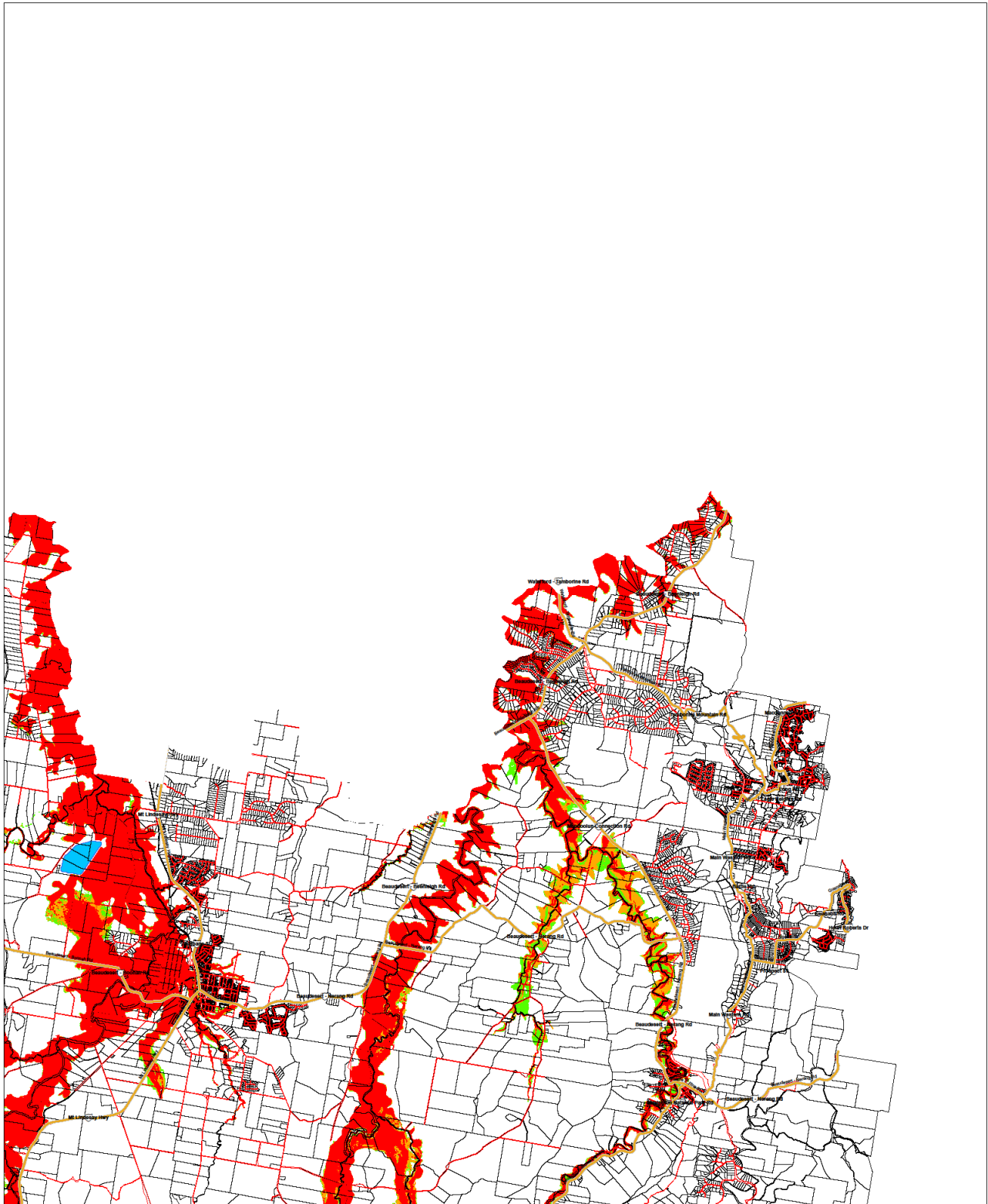
CHARACTER PLACES OVERLAY
Character Places Area
CATCHMENT MANAGEMENT, WATERSHEDS AND WETLANDS OVERLAY
Stream Order Category 'A'
Stream Order Category 'B'
Stream Order Category 'C'
Total Influence Area
Wetlands
Pollutant Load Risk - Low
Pollutant Load Risk - Medium
Pollutant Load Risk - High
Riparian Habitat Presence

OV 3.2C

Development Constraints Overlay - Flood Hazard Category



OV 3.4A



Beauesert Planning Scheme
 Temporal Planning Act 2019

4004-00-001-001

©2019 South West Regional Council
 4004-00-001-001

DATA MUST NOT BE USED FOR DIRECT MARKETING OR BE USED IN BREACH OF THE PRIVACY ACT

SCALE 1:60 000



Temporary Local Planning Instrument 01/2019
 6 November 2019



©2019 South West Regional Council
 4004-00-001-001

THIS NOTICE and South West Regional Council and the Department of Natural Resources & Environment guarantee the accuracy of the information contained herein and the use of the information for the purposes intended. However, the Council and the Department do not accept any liability for any loss or damage arising from the use of the information for any purpose other than that intended.

State of Queensland
 Department of Natural Resources and Mines

State of Queensland
 Department of Environment and Heritage Protection

State of Queensland
 Department of Infrastructure and Transport

State of Queensland
 Department of Communities and Heritage

State of Queensland
 Department of Education and Training

State of Queensland
 Department of Health

State of Queensland
 Department of Housing and Public Works

State of Queensland
 Department of Justice and Attorney-General

State of Queensland
 Department of Local Government and Infrastructure

State of Queensland
 Department of Manufacturing, Innovation and Trade

State of Queensland
 Department of Parks, Recreation and Sport

State of Queensland
 Department of Public Safety

State of Queensland
 Department of Transport and Main Roads

State of Queensland
 Department of Water and Energy

State of Queensland
 Department of Work and Economic Development

State of Queensland
 Department of Youth, Child Safety and Human Services

State of Queensland
 Department of Aboriginal and Torres Strait Islander Communities

State of Queensland
 Department of Communities, Housing and Public Works

State of Queensland
 Department of Education and Training

State of Queensland
 Department of Health

State of Queensland
 Department of Housing and Public Works

State of Queensland
 Department of Justice and Attorney-General

State of Queensland
 Department of Local Government and Infrastructure

State of Queensland
 Department of Manufacturing, Innovation and Trade

State of Queensland
 Department of Parks, Recreation and Sport

State of Queensland
 Department of Public Safety

State of Queensland
 Department of Transport and Main Roads

State of Queensland
 Department of Water and Energy

State of Queensland
 Department of Work and Economic Development

State of Queensland
 Department of Youth, Child Safety and Human Services

State of Queensland
 Department of Aboriginal and Torres Strait Islander Communities

GENERAL INFORMATION

Base Information

County Boundary

Property Boundary

Interstate/Local Railway

Other Transport Routes

Major Road

Other Road

Not Used on Overlay 5.1

Stream

CULTURAL HERITAGE OVERLAY

Cultural Heritage Overlay

INFRASTRUCTURE OVERLAY

Major Transport Routes

State Controlled

Local Road of Significance

Other Transport Routes

State Controlled

Local Road of Significance

Other Road

Future Transport Roads

Recreation Trail

Aviation

Aviation Facility and Buffer

Cycle Infrastructure

Water Treatment Plant

Water Reservoir

Waste Water Treatment Plant

Electricity Network

Substation Site

Power Line >275KV

Power Line 133-275KV

Power Line <132KV

NATURE CONSERVATION OVERLAY

Conservation Significance

Ecological Corridor

Vegetation Sensitive Area

World Heritage Area

Conservation Estate Area

Regional Nature Conservation Area

Local Nature Conservation Area

Conservation Significance

Landscape Aesthetics Area

Conservation Significance

Vegetation Management Area

DEVELOPMENT CONSTRAINTS OVERLAY

Earthquake Hazard Area

Medium Earthquake Hazard

High Earthquake Hazard

Flood and Landslide Hazard

Disturbance Flood Event

Investigation Area

Medium Landslide Hazard

High Landslide Hazard

Landslide Hazard Investigation Area

Flood Hazard Category

High Hazard

Medium Hazard

Low Hazard

CHARACTER PLACES OVERLAY

Character Places Area

CATCHMENT MANAGEMENT, WATERSHEDS AND WETLANDS OVERLAY

Water Supply Catchment Area

Water Supply Source

Exclusive/Mineral Resource

Buffer Area

Head Road

Key Resource Area

Defence Establishment

Water Cycle Investigation Area

Other Constraints

Agriculture Protection Area

View Protection Area

Stream Order Category 'A'

Stream Order Category 'B'

Stream Order Category 'C'

Tidal Influence Area

Wetlands

Pollutant Load Risk - Low

Pollutant Load Risk - Medium

Pollutant Load Risk - High

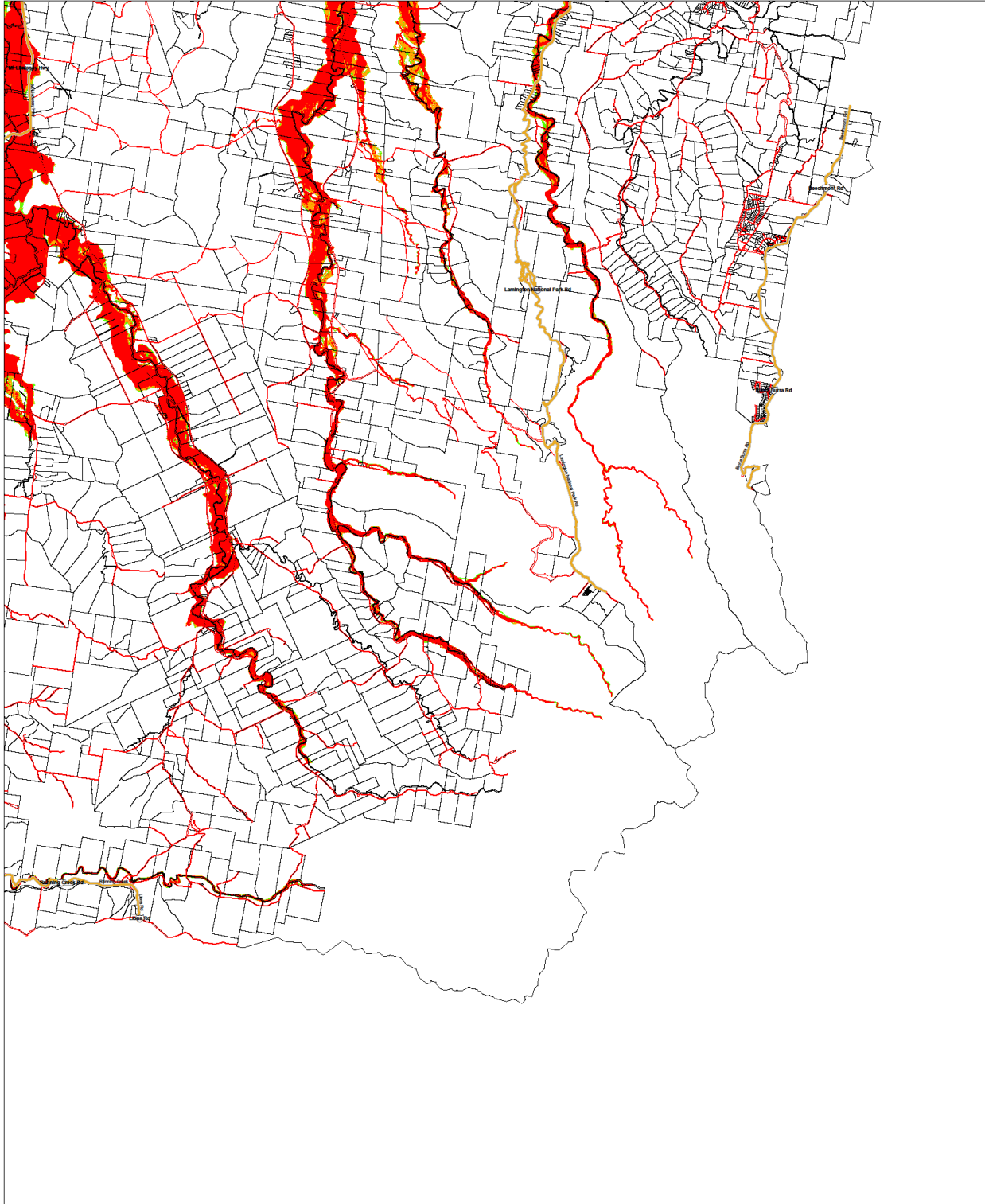
Reptan Habitat Presence

OV 3.4A

Development Constraints Overlay - Flood Hazard Category



OV 3.4B



Beaumont Planning Scheme
 Strategic Planning Unit 1997

DATA MUST NOT BE USED FOR DIRECT
 MAPPING OR BE USED IN BREACH OF THE
 INTENT OF THE LEGISLATION

SCALE 1:60 000



Temporary Local Planning Instrument 01/2019
 6 November 2019

©2012 Scenic Rim Regional Council
 62012 State of Queensland
 Department of Natural Resources and Mines
 This document is the property of Scenic Rim Regional Council and is prepared for the use of the Council and its employees. It is not to be used for any other purpose without the prior written consent of the Council. It is not to be used for any other purpose without the prior written consent of the Council. It is not to be used for any other purpose without the prior written consent of the Council.

GENERAL INFORMATION
 Base Information
 Council Boundary
 Property Boundary
 Municipal Council Boundary
 Not Used on Overlay 1.1
 Major Road
 Minor Road
 Other Road
 Not Used on Overlay 0.1
 Stream
CULTURAL HERITAGE OVERLAY
 Cultural Heritage Overlay

INFRASTRUCTURE OVERLAY
 Major Transport Routes
 State Controlled
 Local Road of Significance
 Intermodal Road
 Other Transport Routes
 State Controlled
 Local Road of Significance
 Restricted Access
 Other Road
 Future Transport Routes
 Recreation Trail

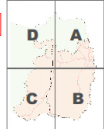
Utilities
 Sewerage Facility and Effluent
 Water Cycle Infrastructure
 Water Treatment Plant
 Water Reservoir
 Waste Water Treatment Plant
 Electricity Network
 Substation Site
 Power Line >275kV
 Power Line 152-275kV
 Power Line <152kV

NATURE CONSERVATION OVERLAY
 Conservation Significance
 Scenic Landscape
 Wetland Sensitive Area
 World Heritage Area
 Conservation Critical Area
 Regional Nature Conservation Area
 Local Nature Conservation Area
 Conservation Significance
 Landscape Aesthetics Area
 Conservation Significance
 Vegetation Management Area

DEVELOPMENT CONSTRAINTS OVERLAY
 Bushfire Hazard Area
 Medium Bushfire Hazard
 High Bushfire Hazard
 Flood and Landslide Hazard
 Defined Flood Event
 Investigation Area
 Medium Landslide Hazard
 High Landslide Hazard
 Landslide Hazard Investigation Area
 Flood Hazard Category
 High Hazard
 Medium Hazard
 Low Hazard

Other Constraints
 Agriculture Protection Area
 View Protection Area
 Water Supply Catchment Area
 Water Supply Source
 Extractive/Recreational Resource
 Duffier Area
 Road
 Key Resource Area
 Defence Establishment
 Airport
 Water Cycle Investigation Area

CHARACTER PLACES OVERLAY
 Character Places Area
CATCHMENT MANAGEMENT, WATERWAYS AND WETLANDS OVERLAY
 Stream Order Category 'A'
 Stream Order Category 'B'
 Stream Order Category 'C'
 Tidal Influence Area
 Wetlands
 Pollutant Load Risk - Low
 Pollutant Load Risk - Medium
 Pollutant Load Risk - High
 Riparian Habitat Presence

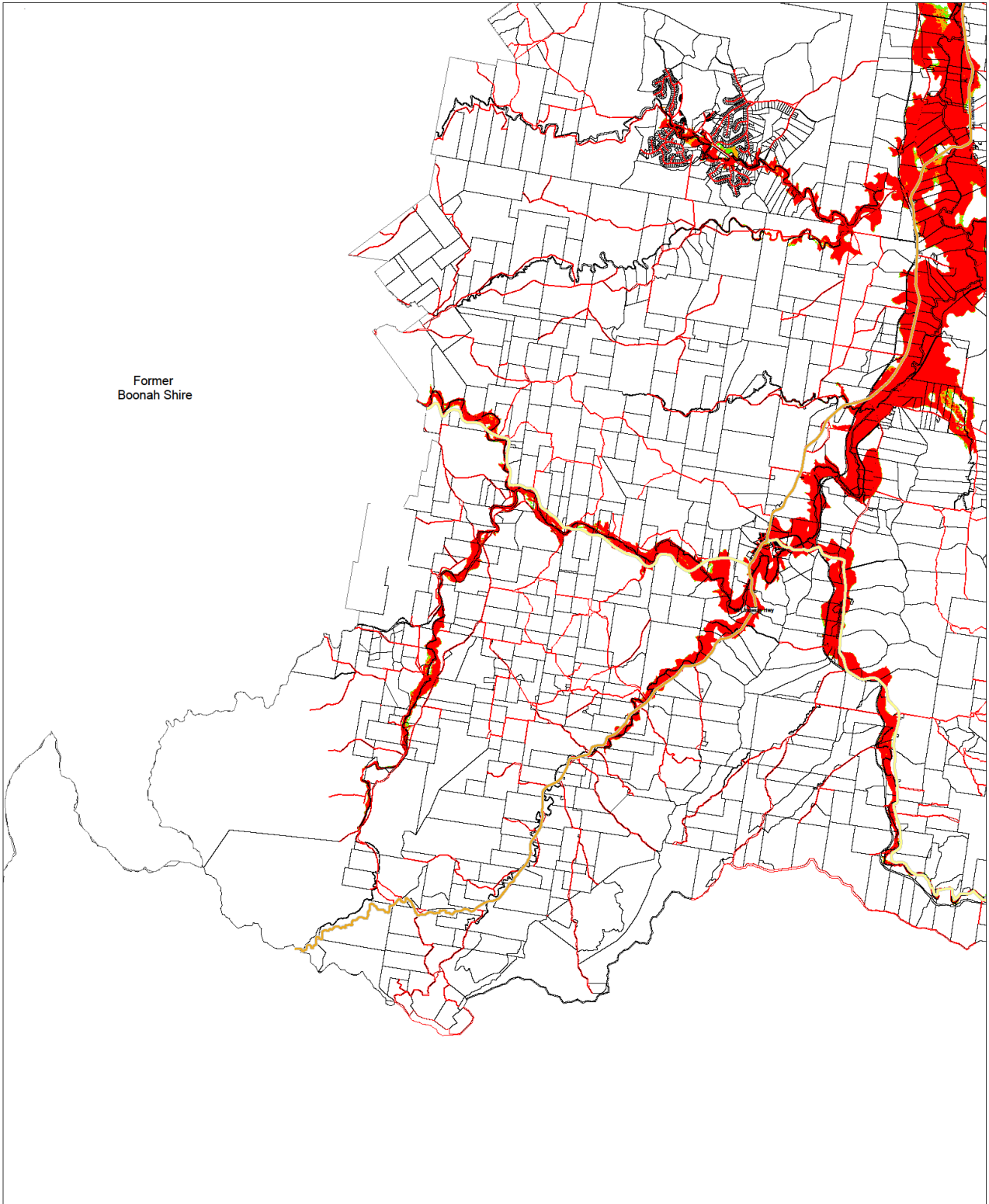


OV 3.4B

Development Constraints Overlay - Flood Hazard Category



OV 3.4C



BRAUDESERT PLANNING SCHEME
Integrated Planning Act 1997

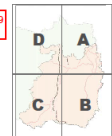
DATA MUST NOT BE USED FOR DIRECT
MAPPING OR BE USED IN BREACH OF THE
PRIVACY LAWS

SCALE 1:60 000

3,000 1,500 0 3,000 6,000 9,000 12,000 Meters

Temporary Local Planning Instrument 01/2019
6 November 2019

| | | | | |
|------------------------------------------------------------------------------------------------------------------------------------------------------------------------------------------------------------------------------------------------------------------------------------------------------------------------------------------------------------------------------------------------------------|------------------------------------------------------------------------------------------------------------------------------------------------------------------------------------------------------------------------------------------------------------------------------------------------------------------------------------------------------------------------------------------------------|-------------------------------------------------------------------------------------------------------------------------------------------------------------------------------------------------------------------------------------------------------------------------------------------------------------------------------------------------------------------------------------------------------------------------------------------------------------------------------------------------------------------------------------------------------------------------------------------------------------------------------------------------------------------------------------------------------------------------|------------------------------------------------------------------------------------------------------------------------------------------------------------------------------------------------------------------------------------------------------------------------------------------------------------------------------------------------------------------------------------------------------------------------------------------------------------------------------------------------------------------------------------------------------------------------------------------------------------------------------------------------------------------------------------------------------------------------------------------------------|-------------------------------------------------------------------------------------------------------------------------------------------------------------------------------------------------------------------------------------------------------------------------------------------------------------------------------------------------------------------------------------------------------------------------------|
| <p>GENERAL INFORMATION</p> <p>State Information</p> <p>State Boundary</p> <p>Property Boundary</p> <p>Interlocal/Local Railway</p> <p>Other Transport Routes</p> <p>State Controlled</p> <p>Major Road</p> <p>Minor Road</p> <p>Other Road</p> <p>Not Used on Overlay E.1</p> <p>Not Used on Overlay E.2</p> <p>Stream</p> <p>CULTURAL HERITAGE OVERLAY</p> <p>Cultural Heritage Overlay</p> | <p>INFRASTRUCTURE OVERLAY</p> <p>Major Transport Routes</p> <p>State Controlled</p> <p>Local Road of Significance</p> <p>Interlocal/Local Railway</p> <p>Other Transport Routes</p> <p>State Controlled</p> <p>Major Road</p> <p>Minor Road</p> <p>Other Road</p> <p>Not Used on Overlay E.1</p> <p>Not Used on Overlay E.2</p> <p>Stream</p> <p>Recreation Trail</p> <p>Recreation Trail</p> | <p>NATURE CONSERVATION OVERLAY</p> <p>Abandon Facility and Buffer</p> <p>Water Cycle Infrastructure</p> <p>Water Treatment Plant</p> <p>Water Reservoir</p> <p>Waste Water Treatment Plant</p> <p>Electricity Substation</p> <p>Isolation Site</p> <p>Power Line >275kV</p> <p>Power Line 132-275kV</p> <p>Power Line <132kV</p> <p>Conservation Significance</p> <p>Ecological Corridor</p> <p>Wetland Sensitive Area</p> <p>World Heritage Area</p> <p>Conservation Caltiva Area</p> <p>Regional Nature Conservation Area</p> <p>Local Nature Conservation Area</p> <p>Conservation Significance</p> <p>Landscape Aesthetics Area</p> <p>Conservation Significance</p> <p>Vegetation Management Area</p> | <p>DEVELOPMENT CONSTRAINTS OVERLAY</p> <p>Quarries Hazard Area</p> <p>Medium Seismicity Hazard</p> <p>High Seismicity Hazard</p> <p>Flood and Landslide Hazard</p> <p>Defined Flood Event</p> <p>Investigation Area</p> <p>Medium Landslide Hazard</p> <p>High Landslide Hazard</p> <p>Landslide Hazard Investigation Area</p> <p>Flood Hazard Category</p> <p>High Hazard</p> <p>Medium Hazard</p> <p>Low Hazard</p> <p>Other Constraints</p> <p>Agriculture Protection Area</p> <p>View Protection Area</p> <p>Water Supply Catchment Area</p> <p>Water Supply Source</p> <p>Extractive/Mineral Resource</p> <p>Butter Area</p> <p>Key Resource Area</p> <p>Defence Establishment</p> <p>Landfill</p> <p>Water Cycle Investigation Area</p> | <p>CHARACTER PLACES OVERLAY</p> <p>Character Places Area</p> <p>CATCHMENT MANAGEMENT, WATERWAYS AND WETLANDS OVERLAY</p> <p>Stream Order Category 'A'</p> <p>Stream Order Category 'B'</p> <p>Stream Order Category 'C'</p> <p>Total Influence Area</p> <p>Wetlands</p> <p>Pollutant Load Risk - Low</p> <p>Pollutant Load Risk - Medium</p> <p>Pollutant Load Risk - High</p> <p>Riparian Habitat Presence</p> |
|------------------------------------------------------------------------------------------------------------------------------------------------------------------------------------------------------------------------------------------------------------------------------------------------------------------------------------------------------------------------------------------------------------|------------------------------------------------------------------------------------------------------------------------------------------------------------------------------------------------------------------------------------------------------------------------------------------------------------------------------------------------------------------------------------------------------|-------------------------------------------------------------------------------------------------------------------------------------------------------------------------------------------------------------------------------------------------------------------------------------------------------------------------------------------------------------------------------------------------------------------------------------------------------------------------------------------------------------------------------------------------------------------------------------------------------------------------------------------------------------------------------------------------------------------------|------------------------------------------------------------------------------------------------------------------------------------------------------------------------------------------------------------------------------------------------------------------------------------------------------------------------------------------------------------------------------------------------------------------------------------------------------------------------------------------------------------------------------------------------------------------------------------------------------------------------------------------------------------------------------------------------------------------------------------------------------|-------------------------------------------------------------------------------------------------------------------------------------------------------------------------------------------------------------------------------------------------------------------------------------------------------------------------------------------------------------------------------------------------------------------------------|

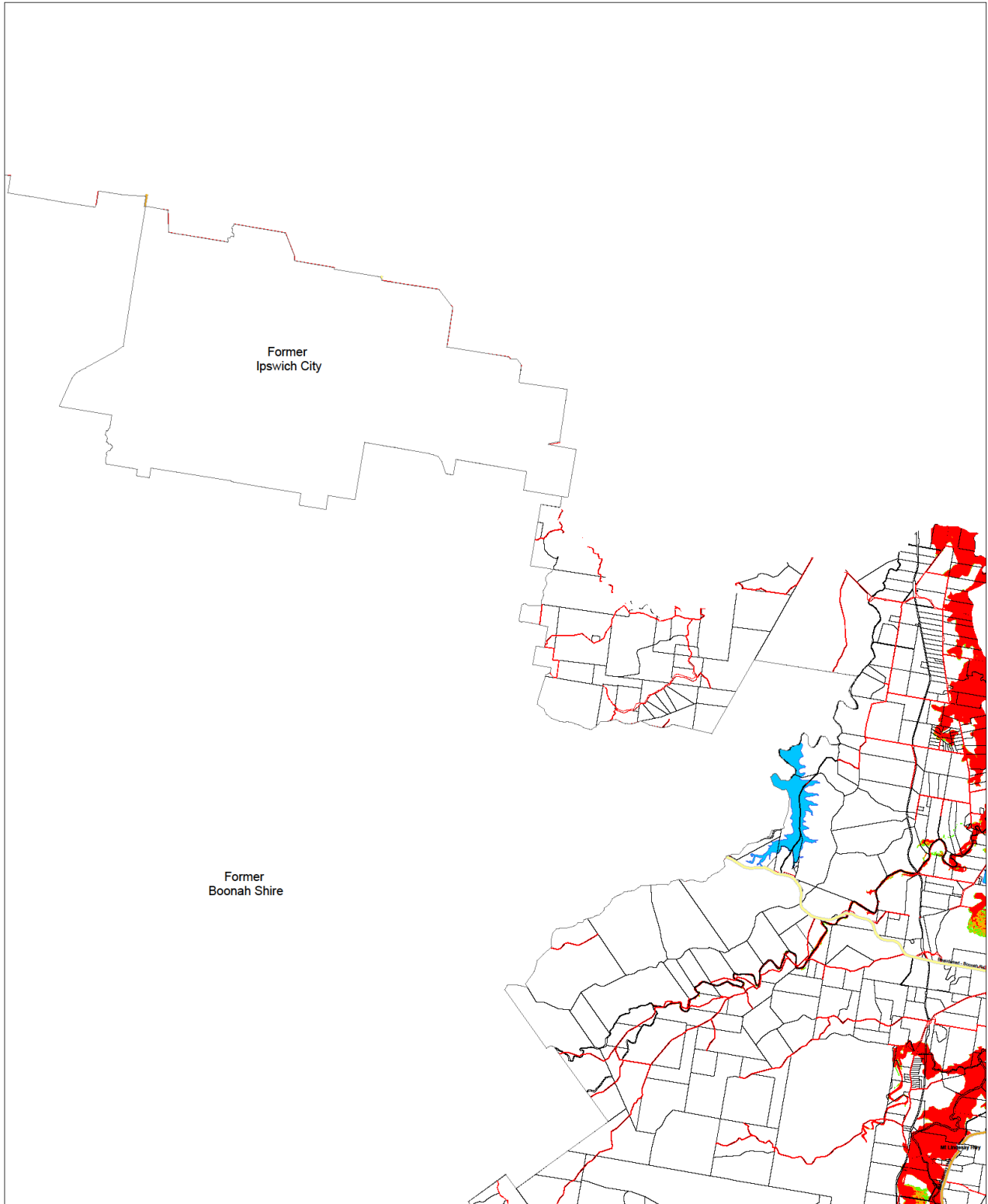


OV 3.4C

Development Constraints Overlay - Flood Hazard Category



OV 3.4D



Beaudesert Planning Scheme
Integrated Planning Act 1997

DATA MUST NOT BE USED FOR DIRECT MARKETING OR RELEASE IN BREACH OF THE PRIVACY LAWS

SCALE 1:60 000

Temporary Local Planning Instrument 01/2019
6 November 2019

60212 (October 2019) Regional Council
60212 (State of Queensland)
Department of Natural Resources and Mines

THIS NOTICE IS Issued By Regional Council and the Department of Natural Resources and Mines and is provided for the information of the community. Council does not take liability for any person's actions and does not hold any responsibility for any loss or damage that may be caused by the use of this information.

COMPLIANCE by determine mapping techniques from information provided by:

- State of Queensland, Department of Urban Planning and Mines
- State of Queensland, Department of Environment, Heritage and Water
- State of Queensland, Department of Infrastructure, Transport, Housing, Energy and Public Works
- State of Queensland, Department of Environment and Heritage Protection
- State of Queensland, Department of Agriculture and Fisheries
- Federal Government, Australian Heritage Commission

Map created and compiled by the Department of Natural Resources, Queensland Government, 2019. Mapping Survey of Queensland (2019) 60212, Queensland Government, 2019.

State Heritage and the Community on Queensland Government, Queensland State Heritage Register, Queensland Government, 2019. Mapping Survey of Queensland (2019) 60212, Queensland Government, 2019.

GENERAL INFORMATION

State Information

- County Boundary
- Interlocal Boundary
- Interlocal Local Railway

Not Used on Overlay 1.1

- Major Road
- Minor Road
- Other Road

Not Used on Overlay 6.1

- Other Road

CULTURAL HERITAGE OVERLAY

- Cultural Heritage Overlay

INFRASTRUCTURE OVERLAY

- Major Transport Road
- State Controlled
- Local Road of Significance
- Interlocal Local Railway

Other Transport Routes

- State Controlled
- Local Road of Significance
- Rehabilitated Access
- Future Transport Road
- Recreation Trail

Aviation

- Aviation Facility and Buffer
- Water Cycle Infrastructure
- Water Treatment Plant
- Water Reservoir
- Electricity Network
- Substation Site
- Power Line 475kV
- Power Line 132-275kV
- Power Line 132kV

NATURE CONSERVATION OVERLAY

- Conservation Significance
- Ecological Corridor
- Rhyolite Sensitive Area
- World Heritage Area
- Conservation Exclusion Area
- Regional Nature Conservation Area
- Local Nature Conservation Area
- Conservation Significance
- Landscape Amenity Area
- Vegetation Management Area

DEVELOPMENT CONSTRAINTS OVERLAY

- State's Hazard Area
- Medium Seismic Hazard
- High Seismic Hazard
- Door
- Defined Flood Event
- Investigation Area
- Medium Landslide Hazard
- High Landslide Hazard
- Landslide Hazard Investigation Area
- Flood Hazard Category
- High Hazard
- Medium Hazard
- Low Hazard

Other Constraints

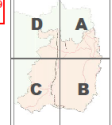
- Agriculture Protection Area
- View Protection Area
- Water Supply Catchment Area
- Water Supply Source
- Extractive/Material Resource
- Buffer Area
- Haar Roads
- Key Resource Area
- Defence Establishment
- Armed
- Water Cycle Investigation Area

CHARACTER PLACES OVERLAY

- Character Places Area

CATCHMENT MANAGEMENT, WETLANDS and WETLANDS OVERLAY

- Stream Order Category 'A'
- Stream Order Category 'B'
- Stream Order Category 'C'
- Tidal Influence Area
- Wetlands
- Pollutant Load Risk - Low
- Pollutant Load Risk - Medium
- Pollutant Load Risk - High
- Riparian Habitat Presence



OV 3.4D

Part II: Boonah Shire Planning Scheme 2006

Item 1: Assessment Table for the Flood Hazard Overlay

This Temporary Local Planning Instrument provides for the following Assessment Tables for the additional Flood Hazard Overlay in Part 5 as Division 14:

Division 14: Assessment Tables for the Flood Hazard Overlay

5.42 Flood Hazard Overlay Description

The Flood Hazard Overlay is a spatial data set that has been developed using the best available information to delineate the Flood Hazard Area in the planning scheme area.

The Flood Hazard Area is shown on Overlay Map 6 and is a combination of both the Defined Flood Event (DFE) and the Investigation Area.

5.43 Assessment Tables and Applicable Codes

Table 1: Assessment Categories and Relevant Assessment Criteria for the Flood Hazard Overlay – Making a Material Change of Use

| Column 1 Defined Use | Column 2 Assessment Category | Column 3 Relevant Assessment Criteria – Applicable Code |
|--------------------------------------------------------------|------------------------------------------------------------------------------------------------------------------------|---------------------------------------------------------------|
| Agriculture Animal Husbandry Roadside Stall Stables | Exempt where the use does not involve Building Work. | Not Applicable |
| Agriculture Animal Husbandry Roadside Stall Stables | Self-Assessable where the use involves Building Work and is located within the Flood Hazard Area on Overlay Map 6. | Probable Solutions 1.4, 2.1 and 3.1 in Section 5.48(A) |
| All other uses | Code assessable if not Exempt or Self-Assessable and the use is located within the Flood Hazard Area on Overlay Map 6. | Flood Hazard Overlay Code |

Table 2: Assessment Categories and Relevant Assessment Criteria for the Flood Hazard Overlay – Other Development

| Column 1 Type of Development | Column 2 Assessment Category | Column 3 Relevant Assessment Criteria - Applicable Code |
|---------------------------------------------------------------------------------|--------------------------------------------------------------------------------------------------------------|---------------------------------------------------------------|
| Reconfiguring a Lot | Code Assessable where the site is in an area identified as being in the Flood Hazard Area on Overlay Map 6A. | Flood Hazard Overlay Code |
| Operational Work for filling or excavation of land exceeding 10m ³ . | Code Assessable where the site is in an area identified as being in the Flood Hazard Area on Overlay Map 6A. | Flood Hazard Overlay Code |

Item 2: Inclusion of assessment criteria for the Flood Hazard Overlay

This Temporary Local Planning Instrument provides for the following Assessment Criteria for the Flood Hazard Overlay in Part 5 as Division 15:

Division 15: Assessment Criteria for the Flood Hazard Overlay

5.44 Flood Hazard Overlay Code

The provisions in Sections 5.46 – 5.48 of this division comprise the Flood Hazard Overlay Code.

5.45 Compliance with the Flood Hazard Overlay Code

Development that, in the Council's opinion, is consistent with the specific outcomes in section 5.50 complies with the Flood Hazard Overlay Code.

5.46 Overall Outcomes for the Flood Hazard Overlay Code

- (1) The overall outcomes are the purpose of the Flood Hazard Overlay Code.
- (2) The overall outcomes sought for the areas subject to the Flood Hazard Overlay Code include:
 - (a) Development that potentially increases the exposure of people and property to flood hazards:
 - (i) avoids areas of significant flood hazard risk; or
 - (ii) where areas of flood hazard risk cannot be practicably avoided, development is designed, located and managed to ensure the safety of people is maintained and the damage to property is minimised before, during and after a flood hazard event;
 - (b) The development siting, layout, and access responds to the risk of the flood hazard, including flood hazard category, and minimises risk to personal safety;
 - (c) The development is resilient to flood events by ensuring siting, design and materials stored on site accounts for the potential risks of flood hazards;
 - (d) The development supports, and does not unduly burden disaster management response or recovery capacity and capabilities;
 - (e) The development directly, indirectly and cumulatively does not materially increase the severity of the flood hazard and does not significantly increase the potential for damage on the site or to other properties;

- (f) The development avoids the release of hazardous materials as a result of a flood event; and
- (g) Natural processes and the protective function of landforms and/or vegetation are maintained in *flood hazard areas*.

5.47 Specific Outcomes for the Flood Hazard Overlay Code

- (1) Table 5.48(A) applies to Self Assessable and Assessable development.
- (2) The Probable Solutions for Self Assessable development are PS1.4, PS2.1 and PS3.1.
- (3) Where self-assessable development is proposed, probable solutions (PS1.4, PS2.1 and PS3.1) are to be read and applied as if they are acceptable solutions only.

5.48(A) Provisions Applicable to Self-Assessable, Code Assessable and Impact Assessable Development

| SPECIFIC OUTCOMES | PROBABLE SOLUTIONS |
|---------------------------------------------------------------------------------------------------------------------------------------------------------------------------------------------------------------------------------------------------------------------------------------------------------------------------------------------|--------------------------------------------------------------------------------------------------------------------------------------------------------------------------------------------------------------------------------------------------------------------------------------------------------------------------------------------------------------------------------------------------------------------------------------------------------------------------------------------------------------------------------------------------------------------------------------------------------------------------------------------------------------------------------------------------------------------------------------------------------------------------------------------------------------------------------------------------------------------------------------------------------------------------------------------------------------------------------------------------------------------------------------|
| <p>SO1 Development siting, layout and access: (1) responds to flooding potential; (2) maintains personal safety at all times; and (3) responds to the flood hazard category on the site.</p> <p><i>Note - Flood Hazard Category is shown on the Development Constraints - Flood Hazard Category Overlay Map.</i></p> | <p>PS1.1 Development: (1) is not located on land in a <i>flood hazard area</i>; or (2) where the development cannot be located on land outside the <i>flood hazard area</i>, all floor levels of habitable rooms are elevated a minimum of 500mm above the <i>defined flood level</i>.</p> <p><i>Note - If part of the site is outside the flood hazard area, this is the preferred location for development.</i></p> <p><i>Note - Building work in a designated flood hazard area must meet the requirements of the relevant building assessment provisions under the Building Act 1975.</i></p> <p><i>Editor's Note - The defined flood level may be obtained from a Council property flood search where the property is located within the Defined Flood Area on</i></p> <p><i>A site based flood study is required that investigates the impact of the development on the floodplain and demonstrates compliance with the Specific Outcome where a flood level is not available (Investigation Area).</i></p> |
| | <p>PS1.2 Development provides for a road and/or pathway layout that ensures residents are not physically isolated by</p> |

| SPECIFIC OUTCOMES | PROBABLE SOLUTIONS |
|-------------------|---------------------------------------------------------------------------------------------------------------------------------------------------------------------------------------------------------------------------------------------------------------------------------------------------------------------------------------------------------------------------------------------------------------------------------------------------------------------------------------------------------------------------------------------------------------------------------------------------------------------------------------------------------------------------------|
| | <p>the <i>defined flood event</i> and provides a safe and clear evacuation route by:</p> <ol style="list-style-type: none"> (1) locating entry points into the development are located outside the <i>flood hazard area</i>; (2) ensuring all roads in the development are located outside the <i>flood hazard area</i>; (3) avoiding cul-de-sacs or other non-permeable layouts; and (4) providing direct and simple routes to main carriageways. |
| | <p>PS1.3 Development ensures that all buildings have vehicle and/or pedestrian evacuation routes outside the <i>flood hazard area</i> to facilitate egress from the site.</p> |
| | <p>PS1.4 Non-residential buildings and structures allow for flow through of flood waters on the ground floor.</p> <p><i>Editor's Note - The relevant building assessment provisions under the Building Act 1975 apply to all building work within the Flood Hazard Area and need to take account of the flood potential within the area.</i></p> |
| | <p>PS1.5 Development either:</p> <ol style="list-style-type: none"> (1) does not create additional lots that are located in the <i>flood hazard area</i>; or (2) creates lots that incorporate a building envelope outside the <i>flood hazard area</i>. <p><i>Editor's note - If part of the site is outside the Flood Hazard Area, this is the preferred location for all lots (excluding park or other relevant open space and recreation lots).</i> <i>Editor's Note - Buildings subsequently developed on the lots created will need to comply with the relevant building assessment provisions under the Building Act 1975</i></p> |
| | <p>PS1.6 There is no intensification of residential uses within flood affected areas on land situated below the <i>defined flood event</i>.</p> <p><i>Editor's note - If part of the site is outside the Flood Hazard Area, this is the preferred location for all buildings.</i></p> |
| | <p>PS1.7 Where the site contains or is within 100m of a floodable waterway, hazard warning signage and depth indicators are provided at key hazard points, such as at floodway crossings or entrances to low-lying reserves.</p> |

| SPECIFIC OUTCOMES | PROBABLE SOLUTIONS |
|---------------------------------------------------------------------------------------------------------------------------------------------------------------------------------------------------------|-------------------------------------------------------------------------------------------------------------------------------------------------------------------------------------------------------------------------------------------------------------------------------------------------------------------------------------------------------------------------------------------------------------------------------------------------------------------------------------------------------------------------------------------------------------------------------------------------------------------------------------------------------------------------------------------------------------------------------------------------------------------------------------------------------------------------------------------------------------------------------------------------------------------------------------------------------------------------------------------------------------------------------------------------------|
| <p>SO2 Development is resilient to flood events by ensuring design, built form and materials stored on site do not increase the potential for damage on the site or to other properties.</p> | <p>PS2.1 Materials stored on site: (1) are readily able to be moved in a flood event; and (2) where capable of creating a safety hazard by being shifted by floodwaters, are contained in order to minimise movement in times of flood.</p> <p><i>Note - Businesses and Animal Husbandry or Cropping uses should ensure that they have the necessary continuity plans in place to account for the potential need to relocate property prior to a flood event (e.g. allow enough time to transfer stock to the upstairs level of a building, an area not affected by flood, or off site).</i></p> <p><i>Note - Queensland Government Fact Sheet 'Repairing your house after a flood' provides information about water resilient products and building techniques.</i></p> |
| <p>SO3 Development avoids the release of hazardous materials into floodwaters.</p> | <p>PS3.1 Development: (1) involving materials manufactured or stored on site are not hazardous or noxious, or comprise of materials that may cause a detrimental effect on the environment if discharged in a flood event; or (2) involving the manufacture or storage of hazardous materials ensures structures are: (a) located above the defined flood level; or (b) designed to prevent the intrusion of floodwaters; or (3) where a defined flood level is not available, ensures hazardous materials and their manufacturing equipment are: (a) located on the highest part of the site to enhance flood immunity; and (b) designed to prevent the intrusion of floodwaters.</p> <p><i>Editor's Note - Refer to the Work Health and Safety Act 2011 and associated Regulation and Guidelines, the Environmental Protection Act 1994 and the relevant building assessment provisions under the Building Act 1975 for requirements related to the manufacture and storage of hazardous substances.</i></p> |

| SPECIFIC OUTCOMES | PROBABLE SOLUTIONS |
|------------------------------------------------------------------------------------------------------------------------------------------------------------------------------------------------------------------------------------------------------------------------------------------------------------------------------------------------------------------------------------------------------------------------------------------------------------------------------------------------------------------------------------------------------------------------|---------------------------------------------------------------------------------------------------------------------------------------------------------------------------------------------------------------------------------------------------------------------------------------------------------------------------------------------------------------------------------------------------------------------------------------------------------------------------------------------------------------------------------------------------------------------------------------------------------------------------------------------------------------------------------------------------------------------------------------------------------------------------------------------------------------------------------------------------------------------------|
| <p>SO4 Development supports, and does not burden, disaster management response or recovery capacity and capabilities.</p> | <p>PS4.1 Development does not: (1) increase the number of people calculated to be at risk from flooding; or (2) increase the number of people likely to need evacuation; or (3) shorten flood warning times; or (4) impact on the ability of traffic to use evacuation routes, or unreasonably increase traffic volumes on evacuation routes.</p> |
| <p>SO5 Development involving community facilities or infrastructure: (1) remains functional to serve community need during and immediately after a flood event; (2) is designed, sited and operated to avoid adverse impacts on the community or the environment due to the impacts of flooding on infrastructure, facilities or access and egress routes; (3) retains essential site access during a flood event; and (4) is able to remain functional even when other infrastructure or services may be compromised in a flood event.</p> | <p>PS5.1 Any components of infrastructure that are likely to fail to function or may result in contamination when inundated by flood, such as electrical switch gear and motors, telecommunications connections, or water supply pipeline air valves, are: (1) located above the <i>defined flood level</i>; and (2) designed and constructed to exclude floodwater infiltration.</p> |
| | <p>PS5.2 Infrastructure is designed and constructed to resist hydrostatic and hydrodynamic forces as a result of inundation by flood.</p> |
| | <p>PS5.3 Development for community services activities or infrastructure activities is located in an area above the following flood levels and has a freeboard of 300mm: (1) 0.5 per cent Annual Exceedance Probability (AEP) for: (a) emergency shelters (b) police facilities (c) sewerage treatment plant (d) Aged Persons Accommodation (e) Community Care Centre (f) Community use involving the storage of valuable records, or items of historic or cultural significance (e.g. archives, museums, galleries, libraries) (2) 0.2 per cent AEP for: (a) Corrective Institution (b) Emergency services (c) power stations (d) Major electrical infrastructure and switch yards. (e) Substation (f) water treatment plant (g) Hospital</p> |
| | <p>PS5.4 For all other development being an</p> |

| SPECIFIC OUTCOMES | PROBABLE SOLUTIONS |
|-------------------------------------------------------------------------------------------------------------------------------------------------------------------------------------------------------------------|------------------------------------------------------------------------------------------------------------------------------------------------------------------------------------------------------------------------------------------------------------------------------------------------------------------------------------------------------------------------------------------------------------------------------------------------------------------------------------------------------------------------------------------------------------------------------------------------------------------------------------------------------------------------------------------------------------------------------------------------------------------------------------------------------------------------------------------------------------------------------------------------------------------------------------------------------------------------------------------------------------------------------------------------------------------------------------------------------------------------|
| | <p>infrastructure activity not listed in PS5.3, such development can function effectively during and immediately after flood events.</p> <p>PS5.5 For all other development being a community services activity not listed in PS5.3, such development is not located on land inundated during a <i>defined flood event</i>.</p> <p>PS5.6 The following uses have direct access to low hazard evacuation routes as defined in Table 1: Low Hazard Evacuation Routes: (1) <i>Community residence</i>; (2) <i>Emergency services</i>; (3) <i>Hospitals</i>; (4) <i>Residential care facility</i>; (5) <i>Retirement facility</i>; (6) <i>Child care centre</i>; (7) <i>Substation</i>; and (8) <i>Utility installations</i>.</p> |
| <p>SO6 Development directly, indirectly and cumulatively avoids any increase in water flow, velocity or flood level and does not increase the potential for damage on site or on other properties.</p> | <p>PS6.1 Development on land in a defined flood event either: (1) do not involve a net increase in filling greater than 50m³ where located in a non-urban area; or (2) do not result in any reductions of on-site flood storage capacity and contain within the subject site any changes to depth, duration and velocity of floodwaters; or (3) do not change flood characteristics outside the subject site in ways that result in: (a) loss of flood storage; (b) loss of/changes to flow paths; (c) acceleration or retardation of flows; and (d) any reduction in flood warning times elsewhere on the floodplain.</p> <p>PS6.2 Where development is located in an area affected by a <i>defined flood event</i>, a hydraulic and hydrology report, prepared by a suitably qualified person, demonstrates that the development: (1) maintains the flood storage capacity on the subject site; (2) does not increase the volume, velocity, concentration or flow path alignment of stormwater flow across sites upstream, downstream or in</p> |

| SPECIFIC OUTCOMES | PROBABLE SOLUTIONS |
|-------------------|----------------------------------------------------------------------------------------------------------------------------------------------------------------------------------------------------------------------------------------------------------------------------------------------------------------------------------------------------------------------------------------------------------------------------------------------------------------|
| | <p>the general vicinity of the subject site; and (3) does not increase stormwater ponding on sites upstream, downstream or in the general vicinity of the subject site.</p> |
| | <p>PS6.3 Works in urban areas associated with the proposed development do not involve: (1) any physical alteration to a watercourse or floodway including vegetation clearing; and/or (2) a net increase in filling (including berms / mounds).</p> <p><i>Editor's note - Berms/mounds are considered to be an undesirable built form outcome and are not supported.</i></p> |

Table 1: Low Hazard Evacuation Routes

| Criteria | Degree of Flood Hazard | | | |
|-------------------------|----------------------------------------------------------------------------------------------------------------------|----------------------------------------------------------------------------------------|-------------------------------------------------------------------------------------------------------------|-------------------------------------|
| | Low | Medium | High | Extreme |
| Wading ability | If necessary children and the elderly could wade. (Generally, safe wading velocity depth product is less than 0.25). | Fit adults can wade. (Generally, safe wading velocity depth product is less than 0.4). | Fit adults would have difficulty wading. (Generally, where wading velocity depth product is less than 0.6.) | Wading is not an option. |
| Evacuation distances | <200 metres | 200-400 metres | 400-600 metres | >600 metres |
| Maximum Flood Depths | <0.3 metres | <0.6 metres | <1.2 metres | >1.2 metres |
| Maximum Flood Velocity | <0.4 metres per second | <0.8 metres per second | <1.5 metres per second | >1.5 metres per second |
| Typical means of egress | Sedan | Sedan early, but 4WD or trucks later. | 4WD or trucks only in early stages, boats or helicopters | Large trucks, boats or helicopters. |

Item 3: Inclusion of new flood-related explanatory terms

This Temporary Local Planning Instrument provides for the following additional explanatory terms in Schedule 1, Part 2:

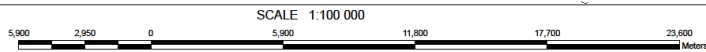
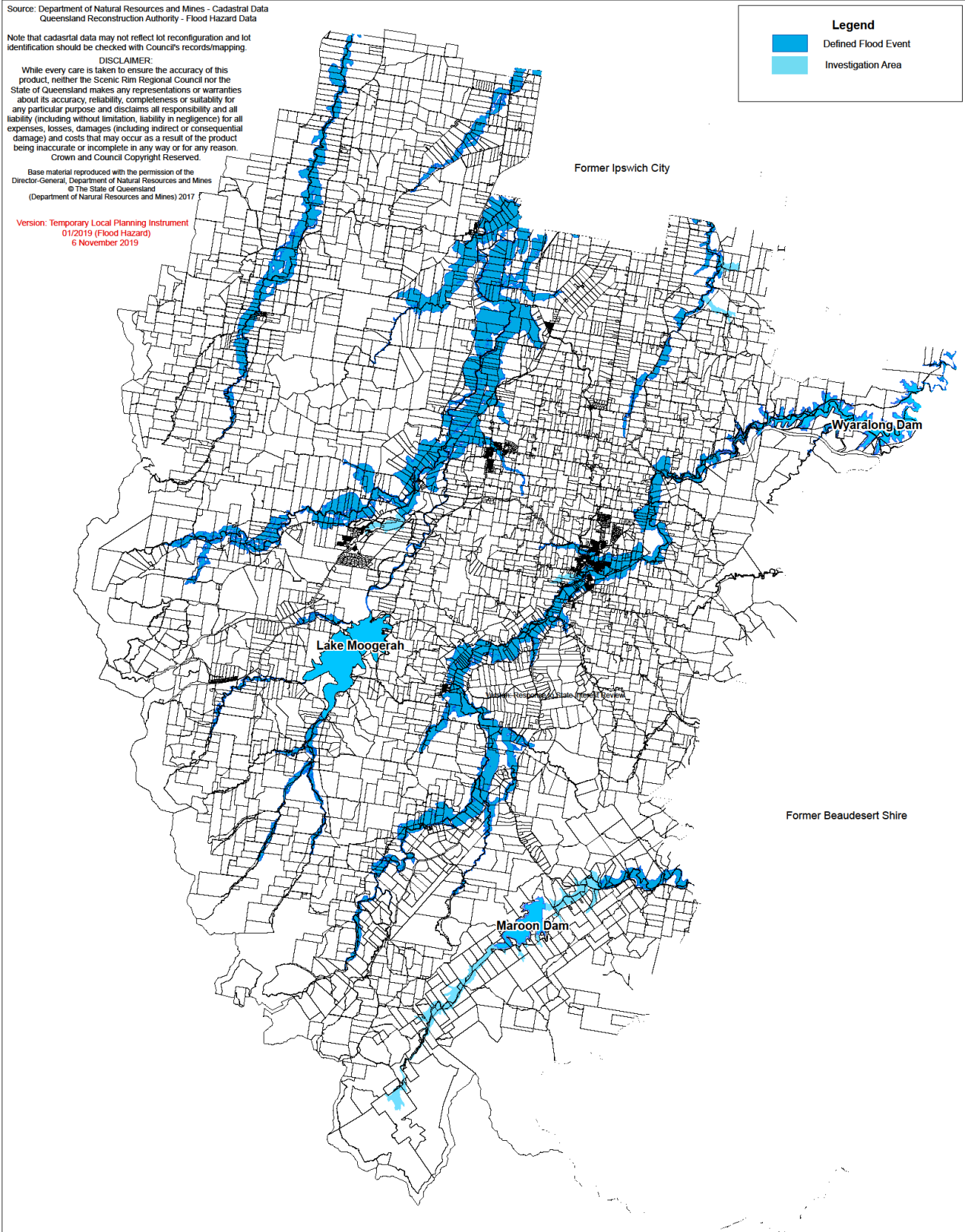
| | |
|-------------------------------|-------------------------------------------------------------------------------------------------------------------------------------------------------------------------------------------------------------------------------------------------------------------------------------------------------------------------------------------------------------------------------------------------------------------------------------------------------------------------------------------------------------------------------------------------------------------------------------------------------------------------------------------------------------------------------------------------------------------------------------------------------------------------------------------------------------------|
| Annual Exceedence Probability | refers to the probability of a flood event occurring in any year. The probability is expressed as a percentage and is determined by undertaking a flood model for a site or area. A Defined Flood Event with a 1% AEP is a flood that is calculated to have a 1% chance of occurring in any one year. The 1% AEP is also known as the 1 in 100 year Average Recurrence Interval (ARI) or Q100 event and is commonly used for urban planning purposes as the line of acceptable risk. |
| Defined Flood Event (DFE) | is a flood event with a 1% AEP. The 1% AEP has been determined as being the level of acceptable risk for development to occur. Where flood modelling based on the 1% AEP has been undertaken in the Scenic Rim, the Defined Flood Event is the area shown on the Flood Hazard Overlay Map as being within the Defined Flood Event (DFE). |
| Defined Flood Level | is the level on a site based on a 1% AEP flood event. The Defined Flood Level is measured in height above mean sea level (AHD). The Defined Flood Level is the minimum planning level that development must adhere to in a given location to minimise the risk of potential flooding. Note: Where land is located in the Investigation Area of the Flood Hazard Overlay Map, a Defined Flood Level based on the 1% AEP flood event may not be available. A flood investigation undertaken by a suitably qualified professional may be required to determine the Defined Flood Level to ensure compliance with the relevant building assessment provisions under the Building Act 1975. |
| Flood Hazard Area | means the area that is shown either in the Defined Flood Event or Flood Investigation Area on Overlay Map 7 – Flood Hazard Overlay. |
| Habitable Room | has the same meaning as in the Building Code of Australia. |
| Investigation Area | means the area that is shown on the Flood Hazard Overlay Map as being within the Investigation Area. The Investigation Area is based on the Queensland Reconstruction Authority’s Interim Floodplain Assessment Overlay (IFAO) maps. The IFAO maps were prepared using a range of existing Statewide datasets to determine floodplain maps where floodplain mapping did not exist. The mapping is based on various landform datasets that represent or indicate previous inundation. The spatial extent of the mapping identifies an area of interest for potential flooding impacts. The mapping is not based on a particular Annual Exceedence Probability (AEP) event or Defined Flood Event (DFE) such as a 1% AEP, nor does it represent the Probable Maximum Flood (PMF), which is commonly derived through |

detailed flood studies to identify the extent of the floodplain. The mapping does not include or specify a flood level or flood flow velocity. The 'Investigation Area' may trigger the requirement for a flood investigation to be undertaken on the site to determine the Defined Flood Level.

Item 4: Flood Hazard Overlay Map

This Temporary Local Planning Instrument provides for the addition of the following overlay maps:

- Overlay Map 6: Flood Hazard Overlay;
- Overlay Map 6A: Flood Hazard Category Overlay.



OVERLAY MAP 6: FLOOD HAZARD OVERLAY

Source: Department of Natural Resources and Mines - Cadastral Data
Queensland Reconstruction Authority - Flood Hazard Data

Not that cadastral data may not reflect lot reconfiguration and lot identification should be checked with Council's records/mapping.

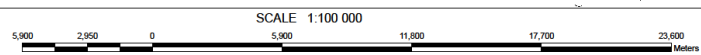
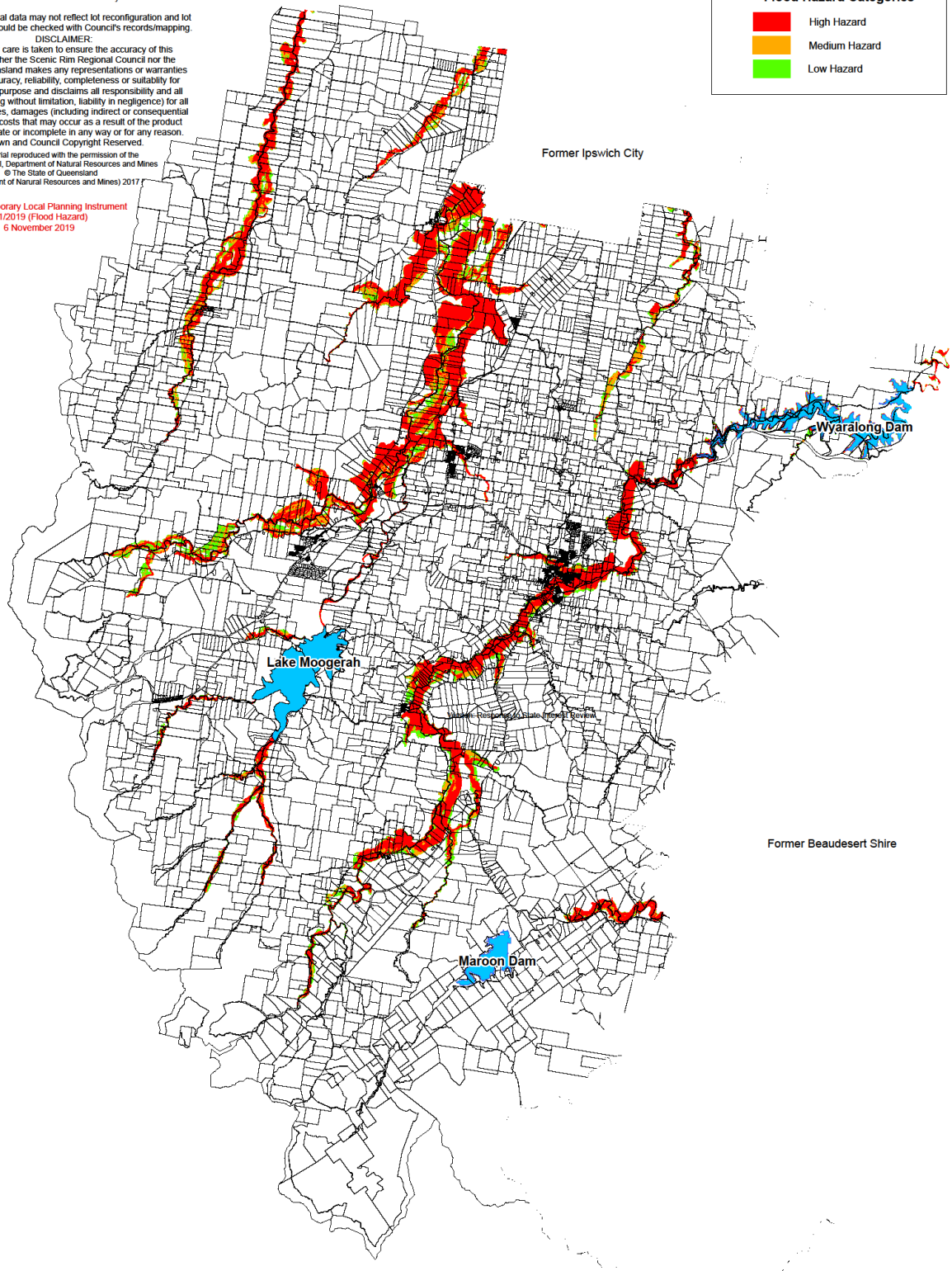
DISCLAIMER:
While every care is taken to ensure the accuracy of this product, neither the Scenic Rim Regional Council nor the State of Queensland makes any representations or warranties about its accuracy, reliability, completeness or suitability for any particular purpose and disclaims all responsibility and all liability (including without limitation, liability in negligence) for all expenses, losses, damages (including indirect or consequential damage) and costs that may occur as a result of the product being inaccurate or incomplete in any way or for any reason. Crown and Council Copyright Reserved.

Base material reproduced with the permission of the Director-General, Department of Natural Resources and Mines © The State of Queensland (Department of Natural Resources and Mines) 2017

Version: Temporary Local Planning Instrument
01/2019 (Flood Hazard)
6 November 2019

Flood Hazard Categories

- High Hazard
- Medium Hazard
- Low Hazard



OVERLAY MAP 6A: FLOOD HAZARD CATEGORY OVERLAY

Part III: Ipswich Planning Scheme 2006

Item 1: Flooding and Urban Stormwater Flow Path Area Overlay

This Temporary Local Planning Instrument suspends the operation of Part 11, Section 11.4.7 - Flood and Urban Stormwater Flow Path Areas and replaces it with the following:

11.4.7 Flood Hazard Area

NOTE 11.4.7 A

- (1) The provisions of this section apply to land identified on Map OV5 as being within the Flood Hazard Area, being either the Investigation Area or the Defined Flood Event.
- (2) Self-Assessable development must comply with Probable Solutions PS1.4, PS2.1 and PS3.1 in Column 2 of Table 11.4.1a to remain Self-Assessable. These are the acceptable solutions for Self-Assessable development.

Table 11.4.1a: Specific Outcomes and Probable Solutions for Development in a Flood Hazard Area

| Column 1 Specific Outcomes | Column 2 Probable Solutions |
|---------------------------------------------------------------------------------------------------------------------------------------------------------------------------------------------------------------------------------------------------------------------------------------------------------------------------------------------|-------------------------------------------------------------------------------------------------------------------------------------------------------------------------------------------------------------------------------------------------------------------------------------------------------------------------------------------------------------------------------------------------------------------------------------------------------------------------------------------------------------------------------------------------------------------------------------------------------------------------------------------------------------------------------------------------------------------------------------------------------------------------------------------------------------------------------------------------------------------------------------------------------------------------------------------------------------------------------------------------------------------------------|
| <p>SO1 Development siting, layout and access: (1) responds to flooding potential; (2) maintains personal safety at all times; and (3) responds to the flood hazard category on the site.</p> <p>Note - Flood Hazard Category is shown on the Development Constraints - Flood Hazard Category Overlay Map.</p> | <p>PS1.1 Development: (1) is not located on land in a <i>flood hazard area</i>; or (2) where the development cannot be located on land outside the <i>flood hazard area</i>, all floor levels of habitable rooms are elevated a minimum of 500mm above the <i>defined flood level</i>.</p> <p>Note - If part of the site is outside the flood hazard area, this is the preferred location for development.</p> <p>Note - Building work in a designated flood hazard area must meet the requirements of the relevant building assessment provisions under the Building Act 1975.</p> <p>Editor's Note - The defined flood level may be obtained from a Council property flood search where the property is located within the Defined Flood Area on</p> <p>A site based flood study is required that investigates the impact of the development on the floodplain and demonstrates compliance with the Specific Outcome where a flood level is not available (Investigation Area).</p> |
| | <p>PS1.2 Development provides for a road and/or pathway layout that ensures residents are not physically isolated by the <i>defined flood event</i> and provides a safe and clear evacuation route by: (1) locating entry points into the development are located outside the <i>flood hazard area</i>; (2) ensuring all roads in the development are located outside the <i>flood hazard area</i>; (3) avoiding cul-de-sacs or other non-permeable layouts; and (4) providing direct and simple routes to main carriageways.</p> |
| | <p>PS1.3 Development ensures that all buildings have vehicle and/or pedestrian evacuation routes outside the <i>flood hazard area</i> to facilitate egress from the site.</p> |

| Column 1 Specific Outcomes | Column 2 Probable Solutions |
|---------------------------------------------------------------------------------------------------------------------------------------------------------------------------------------------------------|----------------------------------------------------------------------------------------------------------------------------------------------------------------------------------------------------------------------------------------------------------------------------------------------------------------------------------------------------------------------------------------------------------------------------------------------------------------------------------------------------------------------------------------------------------------------------------------------------------------------------------------------------------------------------------------------------------------------------------------------------------------------------------------------------------------------------------------------------------------------------------------------------------------------------------------------------------------------------------------------------------------------------------------------------------------------------------------------------------------------------------------------------------------------------------------------------------------------------------------------------------------------------------------------------------------------------------------------------------------------------------------------------------------------------------------------------------------------------------------------------------------------------------------------------------------|
| | <p>PS1.4 Non-residential buildings and structures allow for flow through of flood waters on the ground floor.</p> <p><i>Editor's Note - The relevant building assessment provisions under the Building Act 1975 apply to all building work within the Flood Hazard Area and need to take account of the flood potential within the area.</i></p> <hr/> <p>PS1.5 Development either: (1) does not create additional lots that are located in the <i>flood hazard area</i>; or (2) creates lots that incorporate a building envelope outside the <i>flood hazard area</i>.</p> <p><i>Editor's note - If part of the site is outside the Flood Hazard Area, this is the preferred location for all lots (excluding park or other relevant open space and recreation lots).</i></p> <p><i>Editor's Note - Buildings subsequently developed on the lots created will need to comply with the relevant building assessment provisions under the Building Act 1975</i></p> <hr/> <p>PS1.6 There is no intensification of residential uses within flood affected areas on land situated below the <i>defined flood event</i>.</p> <p><i>Editor's note - If part of the site is outside the Flood Hazard Area, this is the preferred location for all buildings.</i></p> <hr/> <p>PS1.7 Where the site contains or is within 100m of a floodable waterway, hazard warning signage and depth indicators are provided at key hazard points, such as at floodway crossings or entrances to low-lying reserves.</p> |
| <p>SO2 Development is resilient to flood events by ensuring design, built form and materials stored on site do not increase the potential for damage on the site or to other properties.</p> | <p>PS2.1 Materials stored on site: (1) are readily able to be moved in a flood event; and (2) where capable of creating a safety hazard by being shifted by floodwaters, are contained in order to minimise movement in times of flood.</p> <p><i>Note - Businesses and Animal Husbandry or Cropping uses should ensure that they have the necessary continuity plans in place to account for the potential need to relocate property prior to a flood event (e.g. allow enough time to transfer stock to the upstairs level of a building, an area not affected by flood, or off site).</i></p> <p><i>Note - Queensland Government Fact Sheet 'Repairing your house after a flood' provides information about water resilient products and building techniques.</i></p> |

| Column 1 Specific Outcomes | Column 2 Probable Solutions |
|---------------------------------------------------------------------------------------------------------------------------------------------------------------------------------------------------------------------------------------------------------------------------------------------------------------------------|------------------------------------------------------------------------------------------------------------------------------------------------------------------------------------------------------------------------------------------------------------------------------------------------------------------------------------------------------------------------------------------------------------------------------------------------------------------------------------------------------------------------------------------------------------------------------------------------------------------------------------------------------------------------------------------------------------------------------------------------------------------------------------------------------------------------------------------------------------------------------------------------------------------------------------------------------------------------------------------------------------------------------------------------------------------------------|
| <p>SO3 Development avoids the release of hazardous materials into floodwaters.</p> | <p>PS3.1 Development: (1) involving materials manufactured or stored on site are not hazardous or noxious, or comprise of materials that may cause a detrimental effect on the environment if discharged in a flood event; or (2) involving the manufacture or storage of hazardous materials ensures structures are: (a) located above the defined flood level; or (b) designed to prevent the intrusion of floodwaters; or (3) where a defined flood level is not available, ensures hazardous materials and their manufacturing equipment are: (a) located on the highest part of the site to enhance flood immunity; and (b) designed to prevent the intrusion of floodwaters.</p> <p><i>Editor's Note - Refer to the Work Health and Safety Act 2011 and associated Regulation and Guidelines, the Environmental Protection Act 1994 and the relevant building assessment provisions under the Building Act 1975 for requirements related to the manufacture and storage of hazardous substances.</i></p> |
| <p>SO4 Development supports, and does not burden, disaster management response or recovery capacity and capabilities.</p> | <p>PS4.1 Development does not: (1) increase the number of people calculated to be at risk from flooding; or (2) increase the number of people likely to need evacuation; or (3) shorten flood warning times; or (4) impact on the ability of traffic to use evacuation routes, or unreasonably increase traffic volumes on evacuation routes.</p> |
| <p>SO5 Development involving community facilities or infrastructure: (1) remains functional to serve community need during and immediately after a flood event; (2) is designed, sited and operated to avoid adverse impacts on the community or the environment due to the impacts of flooding on</p> | <p>PS5.1 Any components of infrastructure that are likely to fail to function or may result in contamination when inundated by flood, such as electrical switch gear and motors, telecommunications connections, or water supply pipeline air valves, are: (1) located above the <i>defined flood level</i>; and (2) designed and constructed to exclude floodwater infiltration.</p> <p>PS5.2 Infrastructure is designed and constructed to resist hydrostatic and hydrodynamic forces as a result of inundation by flood.</p> |

| Column 1 Specific Outcomes | Column 2 Probable Solutions |
|-----------------------------------------------------------------------------------------------------------------------------------------------------------------------------------------------------------------------------------------------------------|-----------------------------------------------------------------------------------------------------------------------------------------------------------------------------------------------------------------------------------------------------------------------------------------------------------------------------------------------------------------------------------------------------------------------------------------------------------------------------------------------------------------------------------------------------------------------------------------------------------------------------------------------------------------------------------------------------------------------------------------------------------------------------------------------------------------------------------------------------------------------------------------------------------------------------------------------------------------------------------|
| <p>infrastructure, facilities or access and egress routes;</p> <p>(3) retains essential site access during a flood event; and</p> <p>(4) is able to remain functional even when other infrastructure or services may be compromised in a flood event.</p> | <p>PS5.3</p> <p>Development for community services activities or infrastructure activities is located in an area above the following flood levels and has a freeboard of 300mm:</p> <p>(1) 0.5 per cent Annual Exceedance Probability (AEP) for:</p> <ul style="list-style-type: none"> (a) emergency shelters (b) police facilities (c) sewerage treatment plant (d) Aged Persons Accommodation (e) Community Care Centre (f) Community use involving the storage of valuable records, or items of historic or cultural significance (e.g. archives, museums, galleries, libraries) <p>(2) 0.2 per cent AEP for:</p> <ul style="list-style-type: none"> (a) Corrective Institution (b) Emergency services (c) power stations (d) Major electrical infrastructure and switch yards. (e) Substation (f) water treatment plant (g) Hospital |
| | <p>PS5.4</p> <p>For all other development being an infrastructure activity not listed in PS5.3, such development can function effectively during and immediately after flood events.</p> |
| | <p>PS5.5</p> <p>For all other development being a community services activity not listed in PS5.3, such development is not located on land inundated during a <i>defined flood event</i>.</p> |
| | <p>PS5.6</p> <p>The following uses have direct access to low hazard evacuation routes as defined in Table 1: Low Hazard Evacuation Routes:</p> <ul style="list-style-type: none"> (1) <i>Community residence</i>; (2) <i>Emergency services</i>; (3) <i>Hospitals</i>; (4) <i>Residential care facility</i>; (5) <i>Retirement facility</i>; (6) <i>Child care centre</i>; (7) <i>Substation</i>; and (8) <i>Utility installations</i>. |

| Column 1 Specific Outcomes | Column 2 Probable Solutions |
|-------------------------------------------------------------------------------------------------------------------------------------------------------------------------------------------------------------------|------------------------------------------------------------------------------------------------------------------------------------------------------------------------------------------------------------------------------------------------------------------------------------------------------------------------------------------------------------------------------------------------------------------------------------------------------------------------------------------------------------------------------------------------------------------------------------------------------------------------------------------------------------------------------------------------------------------------------------------------------------------------------------------------------------------|
| <p>SO6 Development directly, indirectly and cumulatively avoids any increase in water flow, velocity or flood level and does not increase the potential for damage on site or on other properties.</p> | <p>PS6.1 Development on land in a defined flood event either:</p> <ol style="list-style-type: none"> (1) do not involve a net increase in filling greater than 50m³ where located in a non-urban area; or (2) do not result in any reductions of on-site flood storage capacity and contain within the subject site any changes to depth, duration and velocity of floodwaters; or (3) do not change flood characteristics outside the subject site in ways that result in: <ol style="list-style-type: none"> (a) loss of flood storage; (b) loss of/changes to flow paths; (c) acceleration or retardation of flows; and (d) any reduction in flood warning times elsewhere on the floodplain. |
| | <p>PS6.2 Where development is located in an area affected by a <i>defined flood event</i>, a hydraulic and hydrology report, prepared by a suitably qualified person, demonstrates that the development:</p> <ol style="list-style-type: none"> (1) maintains the flood storage capacity on the subject site; (2) does not increase the volume, velocity, concentration or flow path alignment of stormwater flow across sites upstream, downstream or in the general vicinity of the subject site; and (3) does not increase stormwater ponding on sites upstream, downstream or in the general vicinity of the subject site. |
| | <p>PS6.3 Works in urban areas associated with the proposed development do not involve:</p> <ol style="list-style-type: none"> (1) any physical alteration to a watercourse or floodway including vegetation clearing; and/or (2) a net increase in filling (including berms / mounds). <p>Editor's note - Berms/mounds are considered to be an undesirable built form outcome and are not supported.</p> |

Table 1 Low Hazard Evacuation Routes

| Criteria | Degree of Flood Hazard | | | |
|-------------------------|----------------------------------------------------------------------------------------------------------------------|----------------------------------------------------------------------------------------|-------------------------------------------------------------------------------------------------------------|-------------------------------------|
| | Low | Medium | High | Extreme |
| Wading ability | If necessary children and the elderly could wade. (Generally, safe wading velocity depth product is less than 0.25). | Fit adults can wade. (Generally, safe wading velocity depth product is less than 0.4). | Fit adults would have difficulty wading. (Generally, where wading velocity depth product is less than 0.6.) | Wading is not an option. |
| Evacuation distances | <200 metres | 200-400 metres | 400-600 metres | >600 metres |
| Maximum Flood Depths | <0.3 metres | <0.6 metres | <1.2 metres | >1.2 metres |
| Maximum Flood Velocity | <0.4 metres per second | <0.8 metres per second | <1.5 metres per second | >1.5 metres per second |
| Typical means of egress | Sedan | Sedan early, but 4WD or trucks later. | 4WD or trucks only in early stages, boats or helicopters | Large trucks, boats or helicopters. |

Item 2: Assessment Categories and Relevant Assessment Criteria

This Temporary Local Planning Instrument suspends the operation of Part 11, Table 11.4.3 - Assessment Categories and Relevant Assessment Criteria for Development Constraints Overlays - Making a Material Change of Use and Table 11.4.4 - Assessment Categories and Relevant Assessment Criteria for Development Constraints Overlays - Other Development and replaces it with the following:

Table 11.4.3: Assessment Categories and Relevant Assessment Criteria for Development Constraints Overlays—Making a Material Change of Use

| Column 1 Defined use or use class | Column 2 Assessment category | Column 3 Relevant assessment criteria—applicable code if development is self-assessable or requires code assessment |
|--------------------------------------|-----------------------------------------------------------------------------------------------------------------------------------------------------------------------------------------------------------------------------------------------------------------------------------------------------------------------------------------------------------------------------------------------------------------------|-------------------------------------------------------------------------------------------------------------------------------------------------------------------------------------------------------------------------------------------|
| Agriculture | <p>Self Assessable, where involving Building Work in the Flood Hazard Area.</p> <p>Code Assessable if the land is located within the defence facilities development constraint overlay—</p> <p>(a) and within an unexploded ordnance area (refer Map OV7E); or</p> <p>(b) the use involves turf farming, a vineyard or fruit farming within 8km of the air base runway (refer Map OV7B).</p> <p>Exempt otherwise.</p> | <p>If Self-Assessable—acceptable solutions PS1.4, 2.1 and 3.1 in Table 11.4.1a of Development Constraints Overlay Code (Part 11, division 4);</p> <p>If Code Assessable - Development Constraints Overlays Code (Part 11, division 4)</p> |
| Animal Husbandry | <p>Exempt, where not involving Building Work</p> <p>Self Assessable, where involving Building Work in the Flood Hazard Area.</p> | <p>If Self-Assessable—acceptable solutions PS1.4, 2.1 and 3.1 in Table 11.4.1a of Development Constraints Overlay Code (Part 11, division 4);</p> |
| Caretaker Residential | Code Assessable | Development Constraints Overlay Code (Part 11, division 4) |
| Carpark | <p>Code Assessable, where land affected by the—</p> <p>(a) difficult topography development constraint overlay (refer Map OV4); or</p> <p>(b) flood hazard area (refer Map OV5A); or</p> <p>(c) buffers to highways and regional transport corridors development constraint overlay (refer Map OV6); or</p> <p>(d) unexploded ordnance development constraint overlay (refer Map OV7E).</p> <p>Exempt, otherwise.</p> | <p>Development Constraints Overlays Code (Part 11, division 4)</p> <p>Parking Code (Part 12, division 9)</p> |
| Forestry | <p>Exempt, where land affected by the—</p> <p>(a) key resource areas;</p> <p>(b) haul routes and existing mines development constraint overlay (refer Map OV2); or</p> <p>(c) bushfire risk areas development constraint overlay (refer Map OV1); or</p> <p>(d) high pressure oil and pipelines development constraint overlay (refer Map OV11)</p> | Development Constraints Overlays Code (Part 11, division 4) |
| Home Based Activity | Exempt | |
| Minor Utility | Exempt | |
| Night Court | Code Assessable where the land is located within the defence facilities development | Development Constraints Overlays Code (Part 11, division 4) |

| Column 1 Defined use or use class | Column 2 Assessment category | Column 3 Relevant assessment criteria—applicable code if development is self-assessable or requires code assessment |
|------------------------------------------------------|------------------------------------------------------------------------------------------------------------------------------------------------------------------------------------------------------------------------------------------------------------------------------------------------------------------------------------------------------------------------|----------------------------------------------------------------------------------------------------------------------------------------------------------------------------------------------------------------------|
| | constraint overlay and within the operational airspace, explosive storage safety area or public safety area of the Amberley Air Base (refer Maps OV7A, OV7B and OV7D). Exempt otherwise. | |
| Park | Code Assessable where the land is located within the defence facilities development constraint overlay and within the— (a) operational airspace, explosive storage safety area or public safety area of the Amberley Air Base (refer Maps OV7A, OV7B and OV7D); or (b) unexploded ordnance area (refer Map OV7E). Exempt otherwise. | Development Constraints Overlays Code (Part 11, division 4) Recreation and Entertainment Code (Part 12, division 11) |
| Plant Nursery (wholesale) | Code Assessable where land affected by— (a) difficult topography development constraint overlay (refer Map OV4); or (b) flood hazard area overlay (refer Map OV5A); or (c) unexploded ordnance development constraint overlay (refer Map OV7E); or (d) operational airspace development constraint overlay (refer Map OV7A and OV7B). Exempt otherwise. | Development Constraints Overlays Code (Part 11, division 4) |
| Single Residential | Self-Assessable, where— (a) within the rail corridor overlay (refer Map OV14); or (b) within the High Pressure Pipelines Overlay (refer Map OV11). Code Assessable otherwise. | If Self-Assessable—acceptable solutions for Single Residential in section 12.6.5(8) in the Residential Code (Part 12, division 6) If Code Assessable—Development Constraints Overlays Code (Part 11, division 4). |
| Other (defined use or use class) | Assessment category | Relevant assessment criteria—applicable code if development is self-assessable or requires code assessment |
| All, except uses otherwise identified in this Table. | Code Assessable. | Development Constraints Overlays Code (Part 11, division 4) |

Table 11.4.4: Assessment Categories and Relevant Assessment Criteria for Development Constraints Overlays— Other Development

| Column 1 Type of development | Column 2 Assessment category | Column 3 Relevant assessment criteria—applicable code if development is self-assessable or requires code assessment |
|------------------------------------------------|--------------------------------------------------------------------------------|------------------------------------------------------------------------------------------------------------------------|
| Carrying out building work not associated with | Self-Assessable, if— (a) building work on an existing building on site; and | If Self-Assessable—Planning Scheme Building Matters Code (Part 12, division 16). |

| Column 1 Type of development | Column 2 Assessment category | Column 3 Relevant assessment criteria—applicable code if development is self-assessable or requires code assessment |
|---------------------------------------------------------------------|--------------------------------------------------------------------------------------------------------------------------------------------------------------------------------------------------------------------------------------------------------------------------------------------------------------------------------------------------------------------------------------------------------------------------------------------------------------------------------------------------------------------------------------------------------------------------------------------------------------------------------------------------------------------------------------------------------------------------------------------------------------------------------------------------------------------------------------------------------------------------------------------------------------------------------------------------------------------------------------------------------------------------------------------------------------------------------------------------------------------------------------------------------------------------------------------------------------------------------------------------------------------------------------------------------------------------------------------------------------------------------------------------------------------------------------------------------------------------------------------------------------------------------------------------------------------------------------|-------------------------------------------------------------------------------------------------------------------------------------------------------------------------------------------------------------------------------------------------------------------------------------------------------------------|
| a material change of use ⁵ | (b) the land is situated outside the defence facilities, operational airspace development constraint overlay (refer Map OV7A and OV7B); and (c) the acceptable solutions of the applicable code for self-assessable development are complied with. Code Assessable otherwise. | If Code Assessable— (a) Development Constraints Overlays Code (Part 11, division 4); (b) Planning Scheme Building Matters Code (Part 12, division 16). |
| Clearing of Vegetation—not associated with a material change of use | Exempt, if land affected by the— (a) bushfire risk areas development constraint overlay (refer Map OV1); or (b) key resource areas, haul routes and existing mines development constraint overlay and comprising a Primary Buffer Area (refer Map OV2); or (c) high pressure oil and gas pipelines development constraints overlay (refer Map OV11); or (d) high voltage electricity transmission lines development constraints overlay (refer Map OV13); or (e) defence facilities development constraint overlay (refer Maps OV7A to OV7E). Self-Assessable, if— (a) the acceptable solutions of the applicable code for Self-Assessable development are complied with; and (b) involving clearing of less than 100m ² in area in any one year; and (c) situated within— (i) key resource areas, haul routes and existing mines development constraint overlay and comprising a Secondary Buffer Area; or (ii) difficult topography development constraint overlay (refer Map OV4); or (iii) flood hazard area (refer Map OV5A); or (iv) buffers to highway and regional transport corridors development constraint overlay (refer Map OV6); or (d) motorsports buffers development constraint overlay (refer Map OV8); or (e) wastewater treatment buffers development constraint overlay (refer Map OV9); or (f) Swanbank Power Station buffer development constraint overlay (refer Map OV10); or (g) Warrill Creek Water Catchment development constraint overlay (refer Map OV12). Code Assessable otherwise | If Self-Assessable—acceptable solutions applicable to clauses (1) to (4) in column 2 of Table 12.4.1 in the Vegetation Management Code (Part 12, division 4). If Code Assessable— (a) Development Constraints Overlays Code (Part 11, division 4); (b) Vegetation Management Code (Part 12, division 4). |
| Earthworks—not associated with a material change of use | Code Assessable, if land affected by the— (a) difficult topography development constraint overlay (refer Map OV4); or (b) flood hazard area (refer Map OV5A). Exempt, otherwise. | Development Constraints Overlays Code (Part 11, division 4) Earthworks Code (Part 12, division 15) |
| Minor Building Work | Exempt | |
| Placing advertising device on premises | Code Assessable, if situated within the buffers to highways and regional transport corridors development constraints | Development Constraints Overlays Code (Part 11, division 4) |

⁵ See Ipswich Planning Scheme Users Guide 2 for examples that explain the type of development involved in different proposals.

| Column 1 Type of development | Column 2 Assessment category | Column 3 Relevant assessment criteria—applicable code if development is self-assessable or requires code assessment |
|---------------------------------------------------------------------|------------------------------------------------|------------------------------------------------------------------------------------------------------------------------|
| | overlay (refer Map OV6). Exempt, otherwise. | Advertising Devices Code (Part 12, division 14) |
| Reconfiguring a lot ⁶ | Code Assessable | Development Constraints Overlays Code (Part 11, division 4) Reconfiguring a Lot Code (Part 12, division 5) |
| Carrying out operational work for reconfiguring a lot ¹⁴ | Code Assessable | Development Constraints Overlays Code (Part 1, division 4) Reconfiguring a Lot Code (Part 12, division 5) |
| Other | Exempt | |

Item 3: Definitions

This Temporary Local Planning Instrument suspends the administrative terms 'Adopted Flood Level' and 'Average Recurrence Interval ARI' in Schedule 1, Division 2 and includes the following new administrative terms:

“Annual Exceedence Probability” refers to the probability of a flood event occurring in any year. The probability is expressed as a percentage and is determined by undertaking a flood model for a site or area. A Defined Flood Event with a 1% AEP is a flood that is calculated to have a 1% chance of occurring in any one year. The 1% AEP is also known as the 1 in 100 year Average Recurrence Interval (ARI) or Q100 event and is commonly used for urban planning purposes as the line of acceptable risk.

“Defined Flood Event (DFE)” is a flood event with a 1% AEP. The 1% AEP has been determined as being the level of acceptable risk for development to occur. Where flood modelling based on the 1% AEP has been undertaken in the Scenic Rim, the Defined Flood Event is the area shown on the Flood Hazard Overlay Map as being within the Defined Flood Event (DFE).

“Defined Flood Level” is the level on a site based on a 1% AEP flood event. The Defined Flood Level is measured in height above mean sea level (AHD). The Defined Flood Level is the minimum planning level that development must adhere to in a given location to minimise the risk of potential flooding.

Note: Where land is located in the Investigation Area of the Flood Hazard Overlay Map, a Defined Flood Level based on the 1% AEP flood event may not be available. A flood investigation undertaken by a suitably qualified professional may be required to determine the Defined Flood Level to ensure compliance with the relevant building assessment provisions under the Building Act 1975.

“Flood Hazard Area” means the area that is shown either in the Defined Flood Event or Flood Investigation Area on the Flood Hazard Overlay Map.

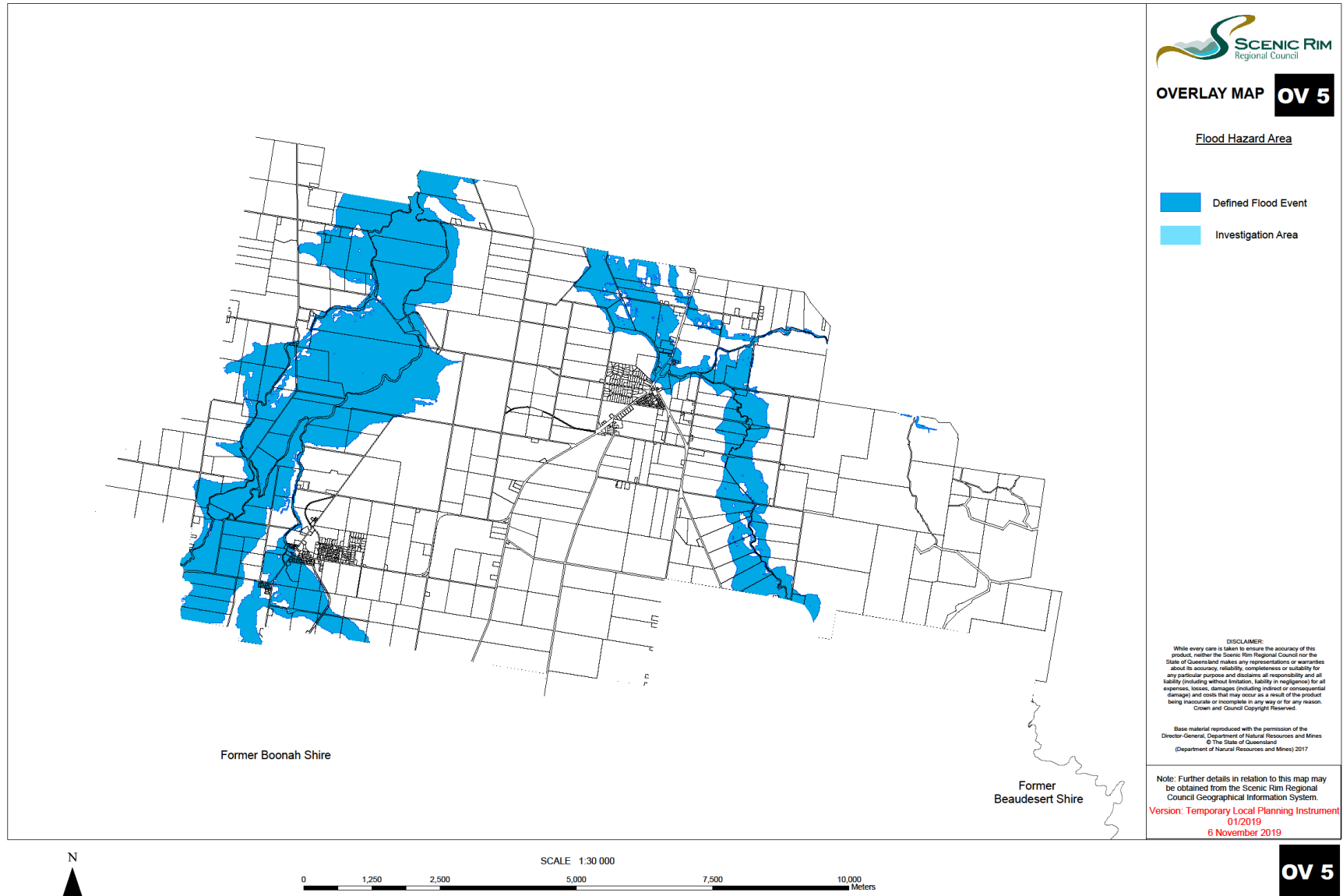
“Habitable Room” has the same meaning as in the Building Code of Australia.

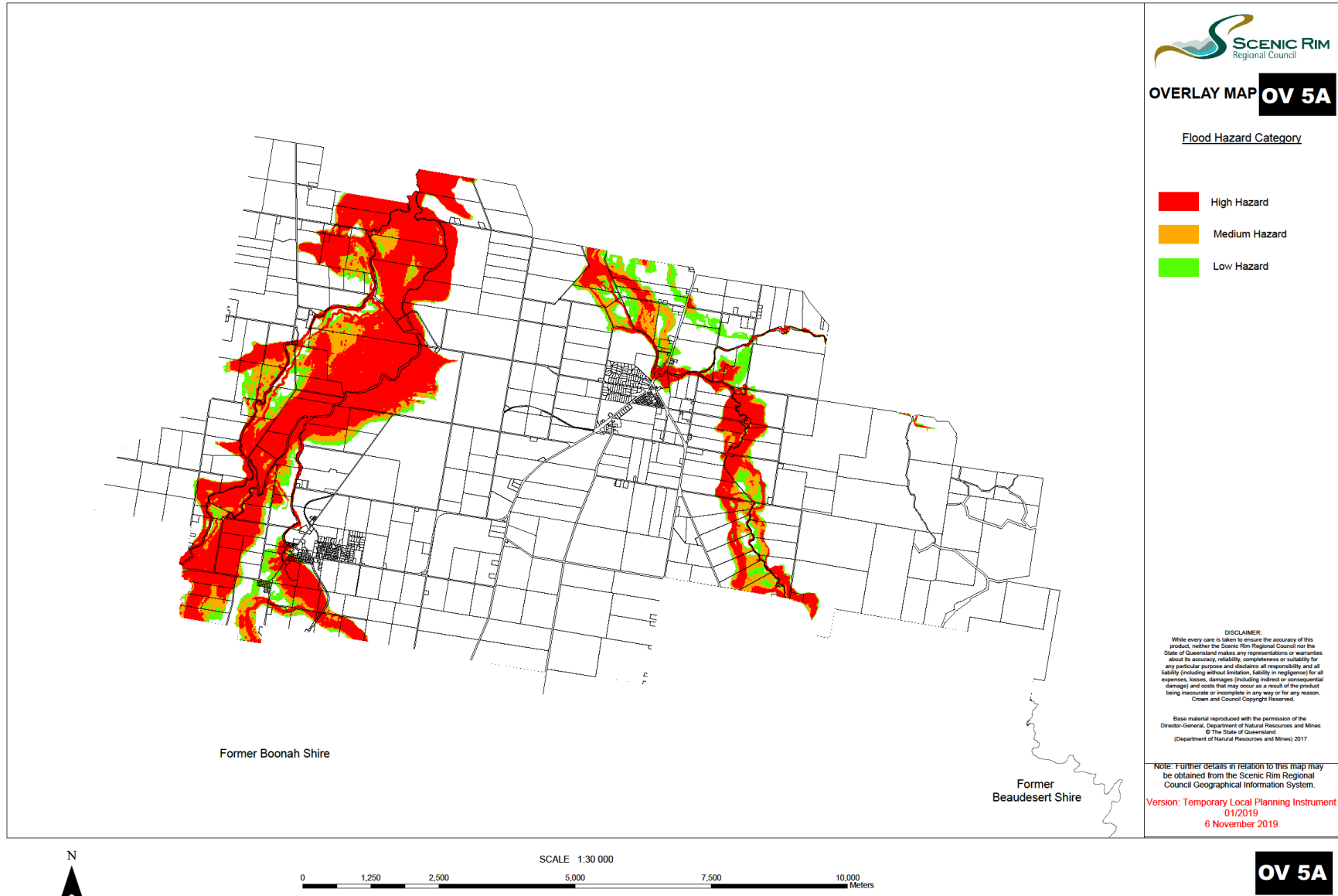
“Investigation Area” means the area that is shown on the Flood Hazard Overlay Map as being within the Investigation Area. The Investigation Area is based on the Queensland Reconstruction Authority’s Interim Floodplain Assessment Overlay (IFAO) maps. The IFAO maps were prepared using a range of existing Statewide datasets to determine floodplain maps where floodplain mapping did not exist. The mapping is based on various landform datasets that represent or indicate previous inundation. The spatial extent of the mapping identifies an area of interest for potential flooding impacts. The mapping is not based on a particular Annual Exceedence Probability (AEP) event or Defined Flood Event (DFE) such as a 1% AEP, nor does it represent the Probable Maximum Flood (PMF), which is commonly derived through detailed flood studies to identify the extent of the floodplain. The mapping does not include or specify a flood level or flood flow velocity. The ‘Investigation Area’ may trigger the requirement for a flood investigation to be undertaken on the site to determine the Defined Flood Level.

Item 4: Flood Hazard Overlay Map

This Temporary Local Planning Instrument suspends the operation of the Flooding and Urban Stormwater Flow Path Areas Overlay Map (OV5) and replaces it with the following Overlay Maps:

- Flood Hazard Overlay Map (OV5); and
- Flood Hazard Category Overlay Map (OV5a).





END OF TEMPORARY LOCAL PLANNING INSTRUMENT