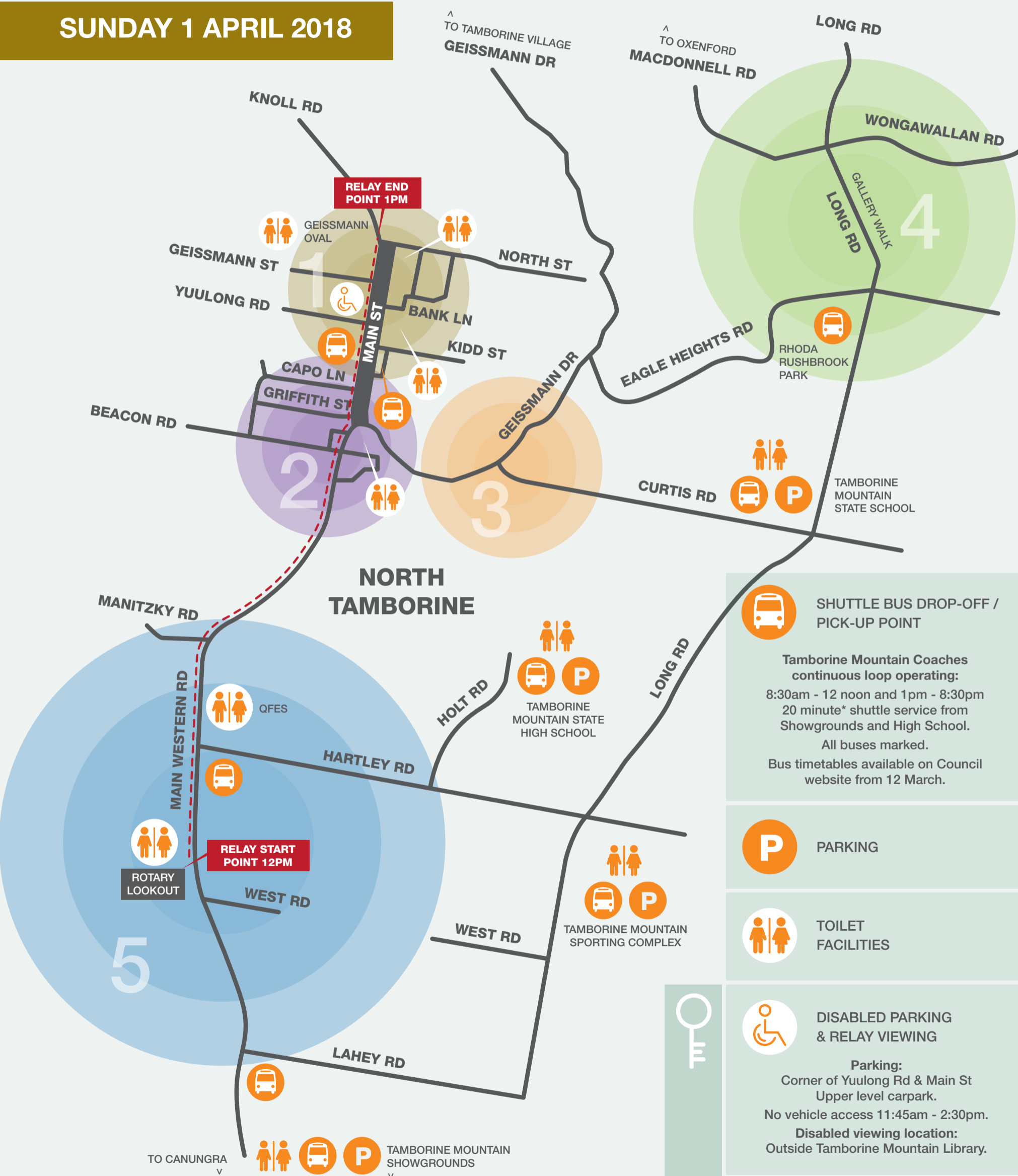


Transport, road and parking plan

Queen's Baton Relay and Community Celebration, Tamborine Mountain

SUNDAY 1 APRIL 2018



Find a detailed map of the coloured areas inside giving details of road closures.

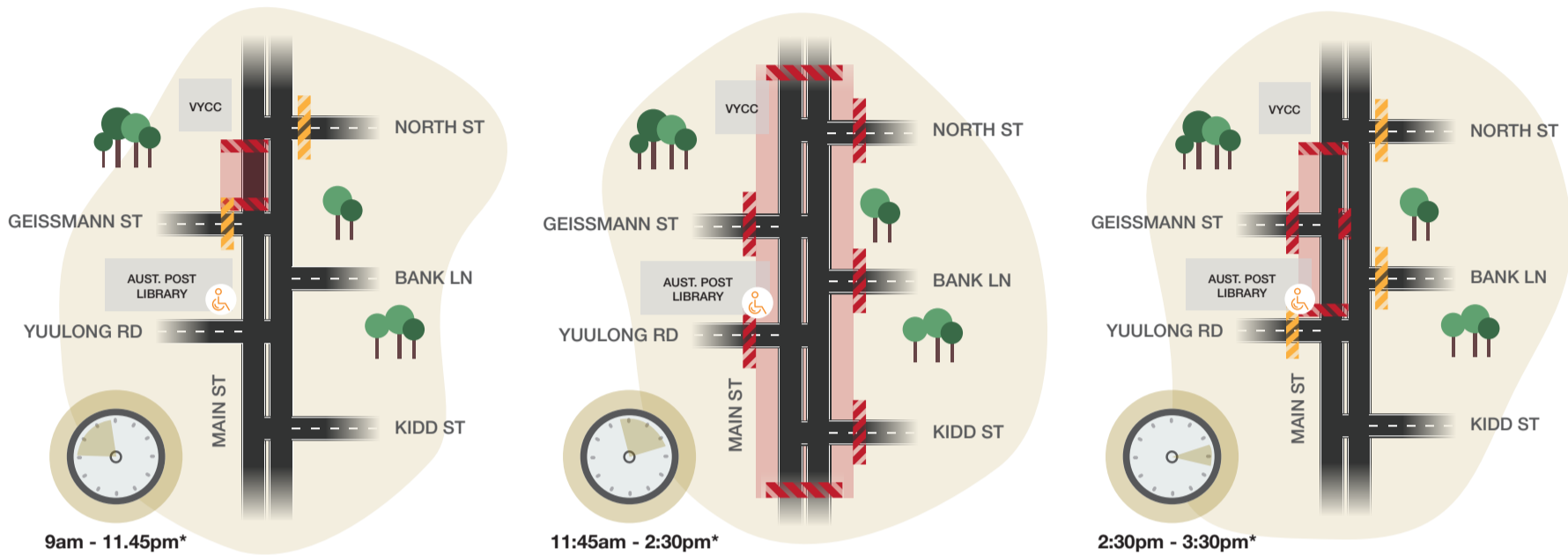
TRANSPORT, ROAD AND PARKING PLAN

QUEEN'S BATON RELAY AND COMMUNITY CELEBRATION, TAMBORINE MOUNTAIN

The eyes of the world will be on Tamborine Mountain for the running of the Queen's Baton Relay on Sunday 1 April from 12pm to 1pm in the lead-up to the opening ceremony of the Gold Coast 2018 Commonwealth Games. This transport, road and parking plan has been devised to ensure the smooth running of the Queen's Baton Relay and the safety of participants and spectators. Check your location on the map to see how the timings of road closures will affect you. A shuttle bus service will assist in transporting residents and visitors throughout the day.

ZONE 1: MAIN ST

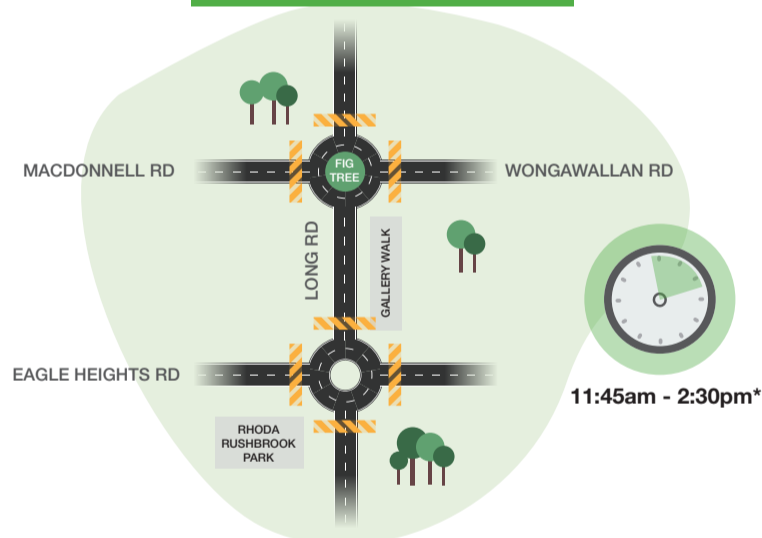
Restricted parking: Affecting Main St northbound lane (same side as Zamia Theatre) from 6am to 3:30pm (emergency vehicles only) and Geissmann St from 6am - 7:30pm.



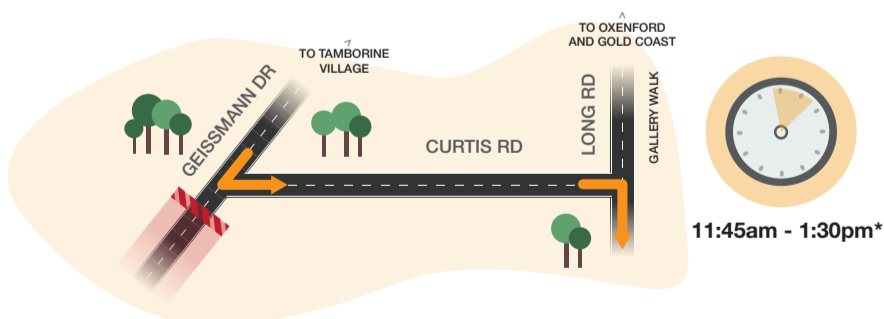
ZONE 2: MAIN WESTERN RD (TAYLOR LN AND REEVE RD)



ZONE 4: LONG RD

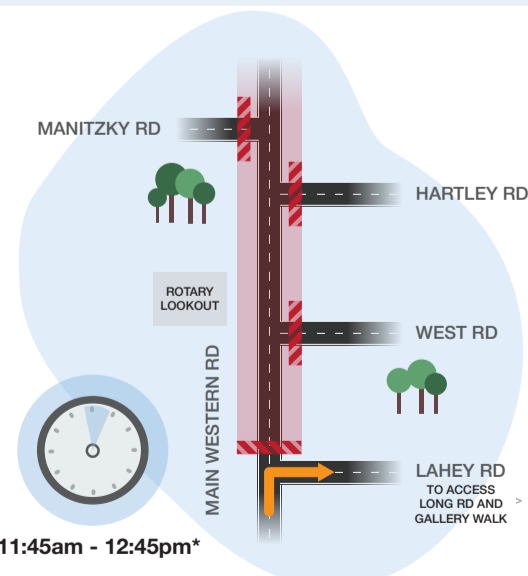


ZONE 3: CURTIS RD



ZONE 5: MAIN WESTERN RD

Restricted parking: Affecting Rotary Lookout, Main St from 6am - 1pm



* indicative timings.



Tamborine Mountain Shared Fire event Sunday 1 April 2018

- A designated disability drop-off and parking zone on Geissmann St will be available between 3:30pm - 7:30pm
- Note: Limited parking on Geissmann St
- A viewing area for people with disabilities and their carers is reserved at Geissmann Oval

Boonah Shared Fire event Tuesday 3 April 2018

- The following road closures will be in place from 3pm - 9pm:
- High Street - from Railway Street to Church Street
 - Park Street from Yeates Avenue to High Street
 - Church Street from Walter Street to Yeates Avenue
 - Railway Street from Yeates Avenue to High Street
 - Laneway closures: Between Walter Street and High Street (next to Australian Hotel)
 - Between Yeates Avenue to High Street (next to Café 17)