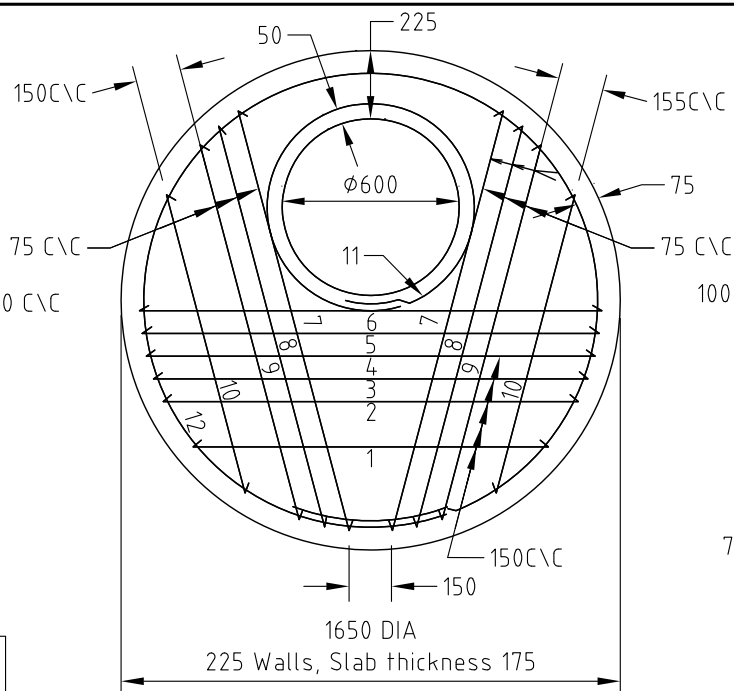


BAR No.	SHAPE	'a'/'b'	OVERALL LENGTH	No. OFF	TOTAL LENGTH
1		937	1175	1	1175
2		1030	1255	1	1255
3	'a'	1125	1350	1	1350
4		1175	1400	1	1400
5		1225	1450	1	1450
6		1125	1350	2	2700
7		1000	1225	2	2450
8		812	1050	2	2100
9	'b'	700	2600	1	2600
10		1200	4200	1	4200
TOTAL					20680

STEEL MASS: 19kg
 CONCRETE: 0.20m³
 TOTAL MASS: 508kg

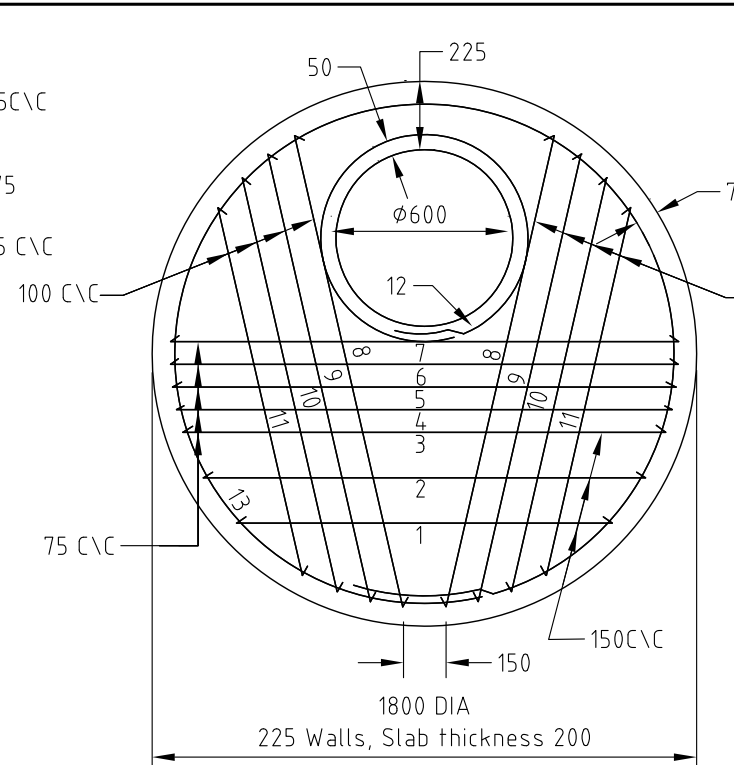
1050 DIA ACCESS CHAMBER



BAR No.	SHAPE	'a'/'b'	OVERALL LENGTH	No. OFF	TOTAL LENGTH
1		1200	1425	1	1425
2		1400	1625	1	1625
3	'a'	1450	1675	1	1675
4		1500	1725	1	1725
5		1520	1745	1	1745
6		1537	1775	1	1775
7		1450	1675	2	3350
8		1375	1600	2	3200
9		1300	1525	2	3050
10		1050	1275	2	2550
11	'b'	700	2600	1	2600
12		1500	5150	1	5150
TOTAL					23250

STEEL MASS: 27kg
 CONCRETE: 0.33m³
 TOTAL MASS: 818kg

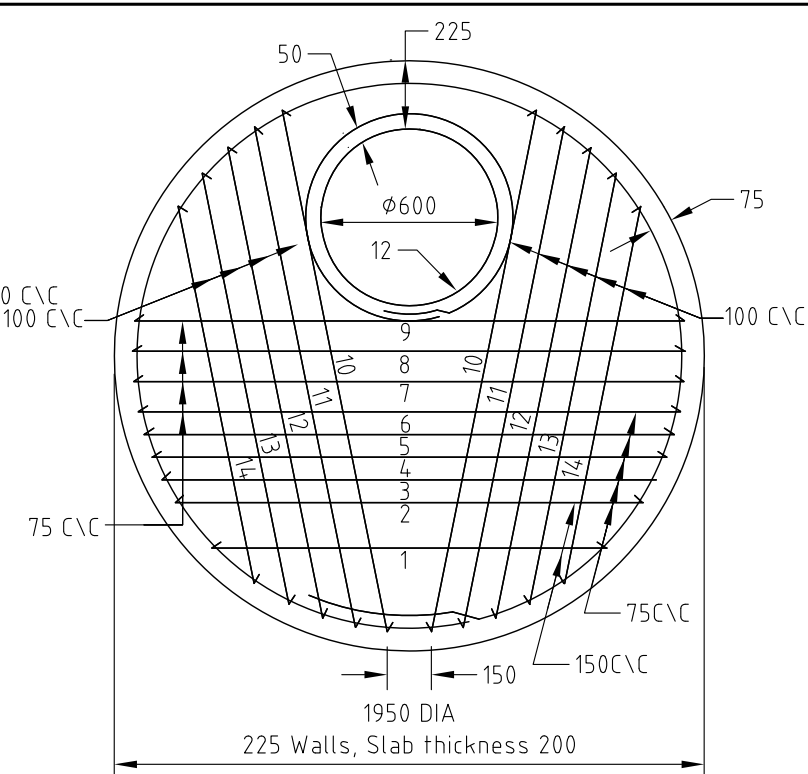
1200 DIA ACCESS CHAMBER



BAR No.	SHAPE	'a'/'b'	OVERALL LENGTH	No. OFF	TOTAL LENGTH
1		1275	1500	1	1500
2		1488	1725	1	1725
3	'a'	1612	1850	1	1850
4		1645	1870	1	1870
5		1675	1900	1	1900
6		1675	1900	1	1900
7		1675	1900	1	1900
8		1600	1825	2	3650
9		1525	1750	2	3500
10		1412	1650	2	3300
11		1262	1500	2	3000
12	'b'	700	2600	1	2600
13		1650	6525	1	6525
TOTAL					34320

STEEL MASS: 31kg
 CONCRETE: 0.45m³
 TOTAL MASS: 1138kg

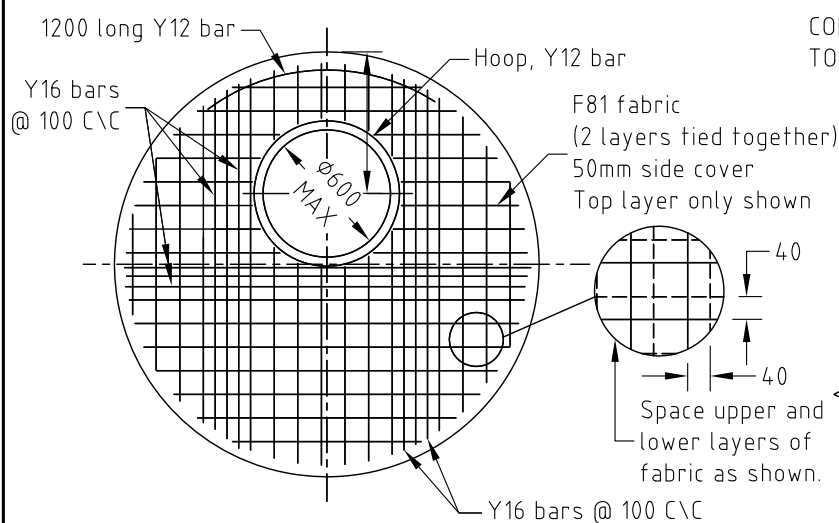
1800 DIA ACCESS CHAMBER



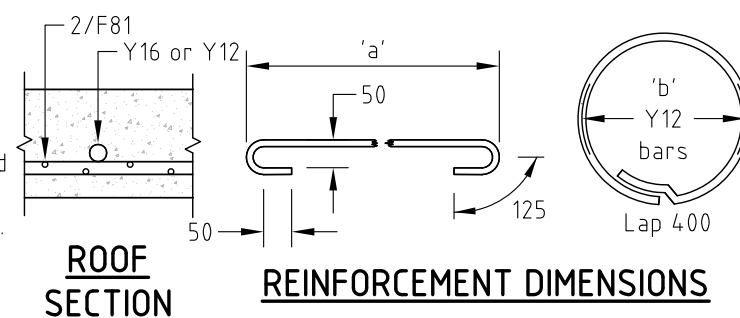
BAR No.	SHAPE	'a'/'b'	OVERALL LENGTH	No. OFF	TOTAL LENGTH
1		1337	1575	1	1575
2		1575	1800	1	1800
3	'a'	1645	1870	1	1870
4		1712	1950	1	1950
5		1756	1980	1	1980
6		1800	2025	1	2025
7		1825	2050	1	2050
8		1837	2075	1	2075
9		1825	2050	1	2050
10		1762	2000	2	2000
11		1700	1925	2	3850
12		1600	1825	2	3650
13		1462	1700	2	3400
14		1275	1500	2	3000
15	'b'	700	2600	1	2600
16		1800	6100	1	6100
TOTAL					43975

STEEL MASS: 39kg
 CONCRETE: 0.55m³
 TOTAL MASS: 1360kg

1950 DIA ACCESS CHAMBER



**FABRIC REINFORCEMENT ALTERNATIVE AND
 Ø1800 AND Ø2100**



ROOF SECTION

REINFORCEMENT DIMENSIONS

NOTES:

- Concrete N40 in accordance with AS1379 (Specification and Supply of Concrete) and AS3600 (Concrete Structures).
- Reinforcement cover 30 MIN (bottom cover).
- Reinforcement :- F81 Fabric to AS1304 (Welded Wire Reinforcing Fabric for Concrete), Bars Y12 and Y16, Grade 400 to AS1302 (Geometrical Product Specifications).
- For lifting anchor locations and details, refer to SRRC D-06.
- Roof design based on Austroads bridge code, W7 wheel load, dynamic factor 0.4.
- All dimensions in millimetres.

Nom Chamber Dia	Roof Thickness
1050	175
1200	175
1350	200
1500	250
1800	250
2100	250

DERIVED FROM IPWEA STD DWG D-011
 SUPERCEDES BOONAH - STD.D-0006,
 BEAUDESERT - 50501, IPSWICH - SD.03